

# GETAWAYS IN CENTRE-VAL DE LOIRE

over 100 places to discover

without a car



LESS THAN  
2 HOURS  
FROM PARIS

© Shutterstock.com



<b>01</b>	<b>At the heart of the star of Tours</b>	
	Discovering Tours and the surrounding area.....	06
	To Chinon.....	08
	To the Bourgueillois.....	09
	To Vendôme.....	10
	To Amboise.....	11
	To the Vallée du Cher.....	12
	To Loches.....	14
	To the Indre and Vienne valleys.....	15
<b>02</b>	<b>At the heart of the star of Orléans</b>	
	Discovering Orléans and the surrounding area.....	18
	To Pithiviers.....	20
	To Montargis.....	21
	To Gien.....	22
	To the Sologne.....	24
	To Beaugency.....	25
<b>03</b>	<b>At the heart of the star of Chartres</b>	
	Discovering Chartres and the surrounding area.....	28
	To Épernon.....	31
	To Châteaudun.....	32
	To the Perche and the Beauce.....	33
<b>04</b>	<b>At the heart of the star of Blois</b>	
	Discovering Blois and the surrounding area.....	36
	To Onzain-Chaumont.....	38
	To Romorantin.....	39
<b>05</b>	<b>At the heart of the star of Châteauroux</b>	
	Discovering Châteauroux and the surrounding area.....	42
	To Issoudun.....	43
	To the Berry.....	44
	To the Indre valley.....	45
<b>06</b>	<b>At the heart of the star of Bourges</b>	
	Discovering Bourges and the surrounding area.....	48
	To the Vallée du Cher.....	50
	The Blanc-argent line.....	51
	To Sancerre.....	53
	To Nevers.....	54
	To Cœur de France in Berry.....	55



<b>Rates and good deals.....</b>	<b>56</b>
<b>Cycling trips to discover the region in a different way.....</b>	<b>58</b>
<b>Map of the Rémi regional network.....</b>	<b>62</b>
<b>Index.....</b>	<b>63</b>



**Reduced fare on presentation of a valid Rémi ticket less than 24 hours old**



Edito



## Tourism in the Centre-Val de Loire with Rémi, stars in your eyes!

Once again this year, the Rémi transport network is celebrating **the diversity of the Centre-Val de Loire's heritage** by taking you as close as possible to the region's tourist gems.

**Proud of its Nature, Culture and Heritage DNA**, the Centre-Val de Loire region is a clever blend of historic places and sites, cultural events, gastronomic traditions and natural environments that will satisfy all your desires for discovery and experience. Leaving from Tours, Orléans, Chartres, Blois, Châteauroux and Bourges, the Regional Council and SNCF Voyageurs invite you on an unforgettable journey to the "stars" of the Centre-Val de Loire constellation.

**Discover emblematic architectural treasures** such as the Châteaux of the Valley of the Kings; stroll or cycle along the paths of the lush Sologne forests or along the canals of Montargis, the "Venice of the Gâtinais"; take a playful trip to the Beauval ZooPark or a sporting and spiritual excursion on the pilgrimage route to Santiago de Compostela.. Rémi will take you wherever your desires take you!

Rémi trains and coaches offer an enhanced, simple and accessible range of transport options to **more than 115 points of interest throughout the region**. It's also about making the choice to travel more serenely, respecting the environment, taking your time, rediscovering the meaning of the word tourism, in "slow" and eco mode.

With Rémi, your visits to the Centre-Val de Loire will be under a lucky star!

**Philippe Fournié**,  
Vice-President of the  
Centre-Val de Loire Region,  
responsible for Mobility,  
Transport and Intermodality

**Hélène Marquet**,  
Regional Director TER  
Centre-Val de Loire,  
SNCF Voyageurs

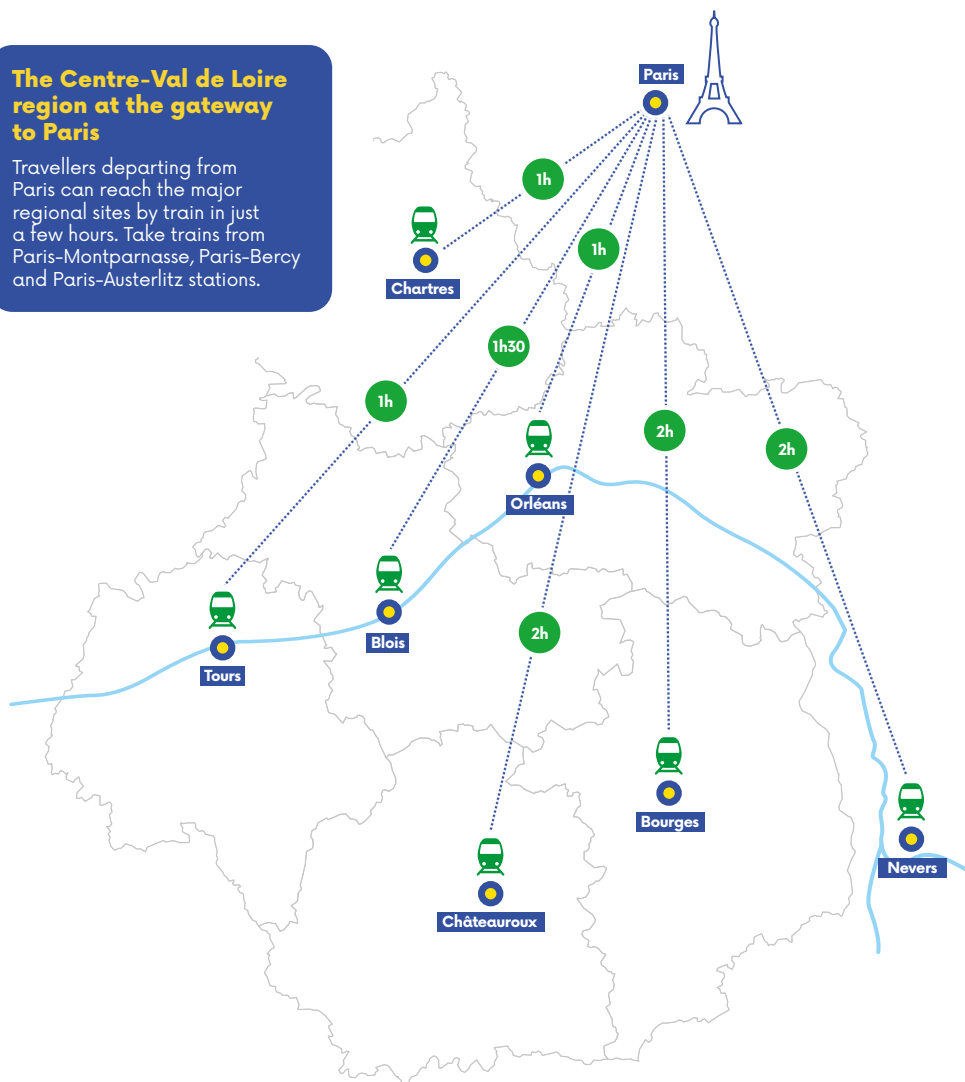


All the tourist sites featured in this guide can be found in an interactive version on the [remi-centrevaldeloire.fr](https://remi-centrevaldeloire.fr) website.

# Less than 2 hours from Paris: car-free getaways

## The Centre-Val de Loire region at the gateway to Paris

Travellers departing from Paris can reach the major regional sites by train in just a few hours. Take trains from Paris-Montparnasse, Paris-Bercy and Paris-Austerlitz stations.



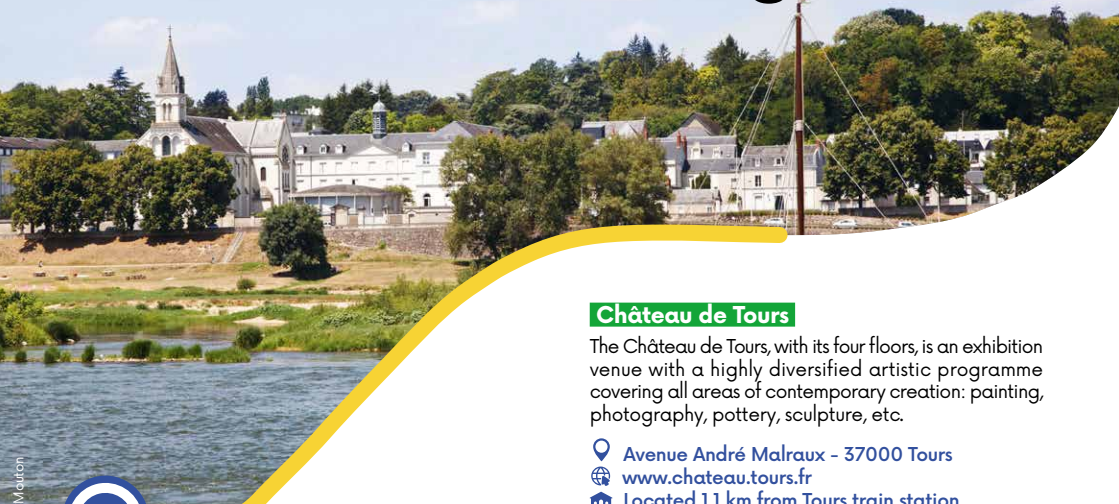
For a map of the Rémi regional public transport network, showing all the stations and stops served, see page 62.



AT THE HEART OF THE STAR  
**OF TOURS**

---

# Discovering Tours and the surrounding area



## Tours

The capital of the Loire Valley and a City of Art and History, Tours is a great place to live. A gourmet, commercial and cultural city, it invites you on a journey between heritage and modernity. Tours is the ideal starting point for exploring the treasures of the Loire Valley.

Nearby, the majestic châteaux invite you to take a trip back in time through France's royal history. When you visit Tours, you'll be immersed in the cultural and architectural wealth that makes this city such a key destination in the region.

- 📍 **Office de Tourisme & des Congrès Tours Loire Valley**  
78-82, rue Bernard Palissy  
37042 Tours
- 🌐 [www.tours-tourisme.fr](http://www.tours-tourisme.fr)
- 🏠 Located opposite Tours train station



## Château de Tours

The Château de Tours, with its four floors, is an exhibition venue with a highly diversified artistic programme covering all areas of contemporary creation: painting, photography, pottery, sculpture, etc.

- 📍 Avenue André Malraux - 37000 Tours
- 🌐 [www.chateau.tours.fr](http://www.chateau.tours.fr)
- 🏠 Located 1.1 km from Tours train station



## Musée du compagnonnage

Housed in the former Saint-Julien Abbey in Tours, the museum boasts some exceptional collections, including over 400 masterpieces by Compagnons from the 19th century to the present day. The three Compagnons societies are represented in some thirty trades.

- 📍 1, square Prosper Mérimée  
37000 Tours
- 🌐 [www.museecompannage.fr](http://www.museecompannage.fr)
- 🏠 Located 1.1 km from Tours train station



## Muséum d'Histoire naturelle

Located in the historic district of Vieux Tours, a stone's throw from Place Plumereau, the Natural History Museum offers permanent and temporary scientific exhibitions, as well as a vast vivarium area and a documentation centre with a wealth of information on the natural sciences.

- 📍 3, rue du Président Merville - 37000 Tours
- 🌐 [www.museum.tours.fr](http://www.museum.tours.fr)
- 🏠 Located 1.2 km from Tours train station



## Musée des Beaux-Arts

One of the most beautiful sites in the Loire Valley is the former archbishop's palace, now the Musée des Beaux-Arts. Its renowned collections, including one of the largest collections of Italian Primitives after the Louvre, make it one of the richest museums in France.

- 📍 Palais des Archevêques  
18, place François Sicard - 37000 Tours
- 🌐 [www.mba.tours.fr](http://www.mba.tours.fr) / [www.musees.regioncentre.fr](http://www.musees.regioncentre.fr)
- 🏠 Located 700 m from Tours train station

## Centre de Création Contemporaine Olivier Debré

In the heart of the Châteaux de la Loire region, the CCC OD provides the city of Tours with a prestigious creative centre of international renown. Its 4,500 m<sup>2</sup> building is exceptional for the quality of its space and the way it is lit: it houses four temporary exhibition spaces, an auditorium, a café-restaurant and a bookshop.

- 📍 Jardin François 1<sup>er</sup> - 37000 Tours
- 🌐 [www.cccod.fr](http://www.cccod.fr)
- 🏠 Located 900m from Tours train station



## Guinguette Tours-sur-Loire

Tours-sur-Loire offers a wide range of activities: bar, restaurant, concerts, sports, entertainment and games for children, open-air cinema, guinguette...

- 📍 1, quai de la Loire - 37000 Tours  
at the foot of the Wilson bridge on the banks of the Loire
- 🏠 Located 2 km from Tours train station

# To Chinon

## Château de l'Islette

A Renaissance château hemmed in by the Indre, Château de l'Islette is reminiscent of its neighbour Azay-le-Rideau. Two brothers, it is often said... It was the site of the passionate love affair between Camille Claudel and Rodin. Its gardens offer a symphony of colours and scents, inviting you to relax and contemplate.

- 📍 9, route de Langeais - 37190 Azay-le-Rideau
- 🌐 [www.chateaudelisleette.fr](http://www.chateaudelisleette.fr)
- 🚉 Located 1.3 km from Azay-le-Rideau train station



## Château d'Azay-le-Rideau

Built in the heart of Touraine during the reign of François I, the Château d'Azay-le-Rideau epitomises the French Renaissance. A masterpiece of 16<sup>th</sup>-century architecture, set on an island shaped by the Indre River, it is surrounded by romantic 19<sup>th</sup>-century parkland.

- 📍 19, rue Balzac - 37190 Azay-le-Rideau
- 🌐 [www.azay-le-rideau.fr](http://www.azay-le-rideau.fr)
- 🚉 Located 2 km from Azay-le-Rideau train station



## City of Chinon

The Chinon Tourist Office offers guided tours of the historic districts and monuments of Chinon, a town of art and history, led by approved tour guides.

- 📍 Office de Tourisme Azay-Chinon Val de Loire  
37500 Chinon
- 🌐 [www.azay-chinon-valde Loire.com](http://www.azay-chinon-valde Loire.com)
- 🚉 Located 1 km from Chinon train station

## Forteresse royale de Chinon

The royal fortress of Chinon, in the heart of the vineyards of the same name and part of the Unesco World Heritage Loire Valley, is built on a rocky spur offering magnificent views over the Vienne and the roofs of the town, which has been awarded the "Town and Country of Art and History" label.

- 📍 37500 Chinon
- 🌐 [www.forteressechinon.fr](http://www.forteressechinon.fr)
- 🚉 Located 1.5 km from Chinon train station



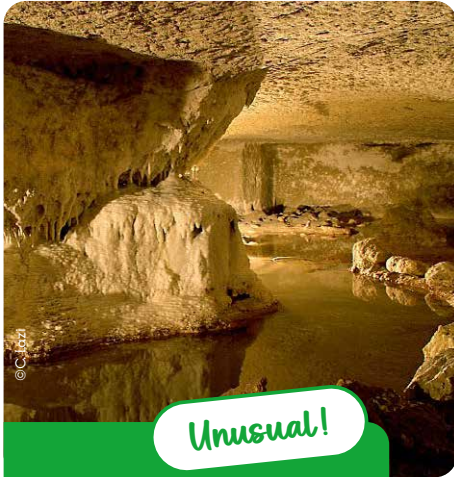


# To le Bourgueillois

## City of Langeais

Located in the historic town of Langeais, the Tourist Office offers a wide range of services all year round: reception, information, promotion, marketing, shop, ticket office, tourist events, breaks and accommodation bookings. Nestling between the forest and the Loire, Langeais is one of the region's must-see places.

- 📍 Office de Tourisme Touraine Nature de Langeais  
19, rue Thiers - 37130 Langeais
- 🌐 [www.tourainenature.com](http://www.tourainenature.com)
- 🏠 Located 260 m from Langeais train station

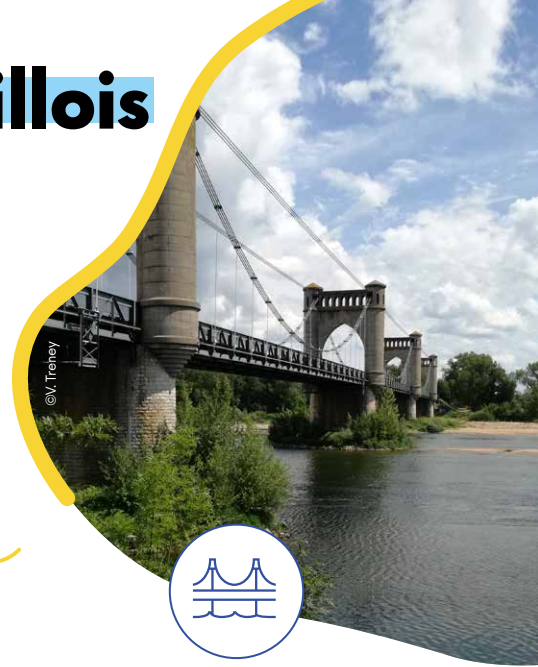


**Unusual!**

## Les Grottes Pétrifiantes

As you descend into the Petrifying Caves of Savonnières-Villandry, you'll discover a fascinating world made up of an underground lake and strange, sparkling limestone concretions. A world where trickling water transforms stone objects and sculpts bas-reliefs.

- 📍 61, rue des Grottes Pétrifiantes  
37510 Savonnières
- 🌐 [www.grottes-savonnieres.com](http://www.grottes-savonnieres.com)
- 🏠 Located 2.6 km from Savonnières train station



## Château de Langeais

The drawbridge at the Château de Langeais is an invitation to discover the life of a nobleman at the dawn of the Renaissance. It hosted the wedding of Charles VIII and Anne of Brittany on 6 December 1491. This event is recreated in the wedding hall with an immersive audiovisual show, narrated by Stéphane Bern himself.

- 📍 Place Pierre de Bosse - 37130 Langeais
- 🌐 [www.chateau-de-langeais.com](http://www.chateau-de-langeais.com)
- 🏠 Located 400 m from Langeais train station



# To Vendôme

## City of Vendôme

On the banks of the Loire, 42 minutes from Paris, discover Vendôme, a town of art and history, water and light, and the birthplace of the famous Renaissance poet Pierre de Ronsard. Vendôme, with its medieval charm, historic treasures and delicious cuisine, offers you an unforgettable getaway.

📍 Office de Tourisme de Vendôme  
Territoires Vendômois:  
47/49, rue Poterie 41100 Vendôme

🌐 [www.vendome-tourisme.fr](http://www.vendome-tourisme.fr)

🏠 Located 1.2 km from Vendôme train station



© C. Mauron - CRT CentreVal de Loire



## Guinguette of Rochecorbon

The Guinguette de Rochecorbon will win you over with its natural setting, a UNESCO World Heritage site, and its panoramic view over the Loire. Considered one of the largest guinguettes in France, its restaurants, bars and dance halls welcome you in a friendly, family atmosphere.

📍 Quai de la Loire - 37210 Rochecorbon

🌐 [www.guinguettederochecorbon.eu](http://www.guinguettederochecorbon.eu)

🏠 Located 5.5 km from Tours train station



© C. Loaz

© S. Lira

# To Amboise



## Château Gaillard

After the discovery of the Americas by Christopher Columbus, Charles VIII, then a young King of France, set off to conquer Italy and returned with "22 gens de mestiers" to found the French Renaissance and its first gardens in Amboise. The royal art of living in the 16<sup>th</sup> century still reigns in this small Italian palace, which welcomes you to the sound of Renaissance music.

- 📍 29, allée du Pont Moulin - 37400 Amboise
- 🌐 [www.chateau-gaillard-amboise.fr](http://www.chateau-gaillard-amboise.fr)
- 🏠 Located 2.6 km from Amboise train station



## City of Amboise

All year round, the Val d'Amboise Tourist Office invites you to discover its wide range of costumed guided tours and classic guided tours of the town and its Châteaux.

- 📍 Quai du Général de Gaulle - 37400 Amboise
- 🌐 [www.amboise-valdeoire.com](http://www.amboise-valdeoire.com)
- 🏠 Located 1.3 km from Amboise train station

## Château d'Amboise

The Château d'Amboise became a royal residence under the reigns of Kings Charles VIII and François I. Its influence attracted the Court and many European artists, such as Leonardo da Vinci, whose tomb is preserved at the Château. This landmark of French history boasts an exceptional collection of Gothic and Renaissance furniture.

- 📍 Rampe du Château - 37400 Amboise
- 🌐 [www.chateau-amboise.com](http://www.chateau-amboise.com)
- 🏠 Located 1.3 km from Amboise train station



## Château du Clos Lucé

The Château du Clos Lucé invites you to discover the French history of Leonardo da Vinci. In 1516, at the invitation of King Francis I, he took up residence at the "Manoir du Cloux", just a few hundred metres from the Royal Château of Amboise. The artist brought with him three of his masterpieces: the Mona Lisa, the Saint John the Baptist and the Saint Anne, as well as his notebooks and manuscripts.

- 📍 2, rue du Clos Lucé - 37400 Amboise
- 🌐 [www.vinci-closluce.com](http://www.vinci-closluce.com)
- 🏠 Located 2 km from Amboise train station



# To the Vallée du Cher

## Escape Kazoku

Escape Kazoku welcomes you to share a unique Escape Game experience with your family, friends or colleagues. Search and solve the enigmas. Work together to overcome the challenges and, above all, escape before it's too late!

- 📍 14, Avenue du Colonel Jacques Soufflet - 37150 La Croix en Touraine
- 🌐 [www.escapekazoku.com](http://www.escapekazoku.com)
- 🏠 Located 350 m from Bléré-la-Croix train station



## Tours-Canoë

Set off on a wilderness adventure on the Loire in a canoe, stand-up paddle or giant paddle. Round off your experience with our Loire cycling packages and add a wine tasting to the mix for an unforgettable local experience. For a few hours, a day or several days in a bivouac.

- 📍 Base nautique : gare de Vouvray RD 952, 37210 Vouvray
- 🌐 [www.tours-canoë.fr](http://www.tours-canoë.fr)
- 🏠 Located 900 m from Montlouis train station



## ZooParc de Beauval

The ZooParc de Beauval, ranked 4<sup>th</sup> most beautiful zoo in the world, offers an unforgettable journey to meet 35,000 animals divided into 800 species, some of which are extremely rare and unique in France: giant panda, koala, Tasmanian devil, yellow-backed duiker... Embark on an incomparable world tour through 22 specific territories.

- 📍 Avenue du Blanc, 41110 Saint-Aignan
- 🌐 [www.zoobeauval.com](http://www.zoobeauval.com)
- 🏠 Access by bus Rémi 41, line 2, departure from Blois and Saint-Aignan - Noyers bus station



## Château de Chenonceau

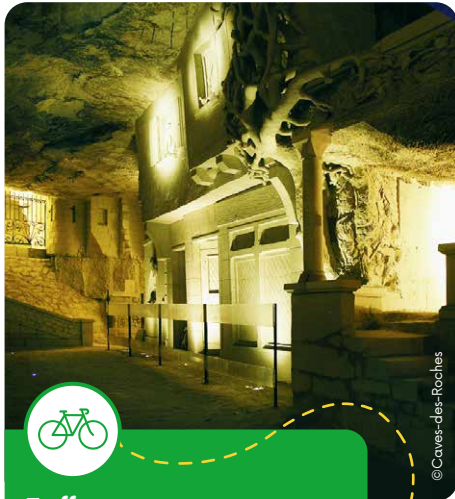
A masterpiece of the Renaissance, the Château de Chenonceau welcomes you every day, all year round. Museum collection, remarkable gardens, labyrinth, vegetable garden, evening walk, floral displays in every room. Gourmet restaurant, Cave des Dômes (Touraine Chenonceaux AOC wine tasting), tea room.

- 📍 37150 Chenonceaux
- 🌐 [www.chenonceau.com](http://www.chenonceau.com)
- 🏠 Located 300 m Chenonceaux train station

## Aquarium de Touraine

Set off to discover the Loire, and then on to tropical freshwater and the farthest seas... 10 themed rooms, 80 aquariums and over 2 million litres of water: the Aquarium de Touraine is a real invitation to travel!

- 📍 Lieu-dit Les Hauts Boeufs - Route de l'Aquarium 37400 Lussault-sur-Loire
- 🌐 [www.grandaquariumdetouraine.com](http://www.grandaquariumdetouraine.com)
- 🏠 Access by bus Rémi 37, line C, departure from Tours bus station



### Truffeau quarry and underground city

From Montrichard station, cycle to the incredible reconstruction of an underground town that has sprung up from the depths of an underground gallery. Striking realism for a timeless walk. The tour is combined with a visit to the mushroom farms. Catering available on site for groups (over 20 people).

- 📍 40 route des Roches - Bourré 41400 Montrichard Val de Cher
- 🌐 [www.le-champignon.com](http://www.le-champignon.com)
- 🏠 Located 2 km from Bourré train station



## City of Montrichard

Take a guided tour of the historic town of Montrichard. This authentic 11<sup>th</sup>-century medieval town invites you to discover its famous keep, its fortifications, its cobbled streets, its medieval historical heritage and its breathtaking views over the Cher valley.

- 📍 41400 Montrichard Val de Cher
- 🌐 [www.montrichardvaldecher.com](http://www.montrichardvaldecher.com)
- 🏠 Located 1.5 km from Montrichard train station



# To Loches

## Cité royale de Loches

An architectural gem from the late Middle Ages and an unusual sight in the Loire Valley châteaux landscape, the 37-metre keep is a masterpiece of 11<sup>th</sup>-century military architecture and one of the best preserved in Europe. Its interactive tour takes visitors back over 5 centuries of history and into the prison world of the time.

- 📍 5 place Charles VII - 37600 Loches
- 🌐 [www.citeroyaleloches.fr](http://www.citeroyaleloches.fr)
- 🏠 Located 230 m from Loches train station



## City of Loches

Follow the guide through the town's narrow, hidden streets to discover the emblematic monuments that have earned the town the "Town of Art and History" label. From the medieval citadel to the Renaissance town, a thousand years of history will be told to you.

- 📍 Place de la Marne - 37600 Loches
- 🌐 [www.loches-valde Loire.com](http://www.loches-valde Loire.com)
- 🏠 Located 180 m from Loches train station

## Horse-drawn carriage tour of Loches and Beaulieu-lès-Loches

To the peaceful rhythm of the horses, you'll discover the architectural and environmental treasures of Loches and Beaulieu-Les-Loches. For 45 minutes, to the sound of hooves, this stroll will plunge you into the history of these two towns, one royal, the other monastic.

- 📍 Place de la Marne - 37600 Loches
- 🌐 [www.beaulieulesloches.eu](http://www.beaulieulesloches.eu)
- 🏠 Located 1.2 km from Loches train station



## Fortresse de Montbazon

Discover the fortress of Montbazon and its history, with activities for all the family: guided tours, demonstrations and workshops on the trades of the Middle Ages.

- 📍 12-14, rue du Château - 37250 Montbazon
- 🌐 [www.fortressedemontbazon.com](http://www.fortressedemontbazon.com)
- 🏠 Located 1 km from Montbazon train station

@Gillard et Vince



@les-Trois-de-Beaulieu



# To the Indre and Vienne valleys

## Maison du Souvenir

On 25 August 1944, 124 inhabitants of the village of Maillé were massacred by German soldiers and the village was almost completely destroyed. For a very long time, this tragedy raised many questions: by whom was it committed and for what reasons? The House of Remembrance is an educational space that aims to answer these questions.

- 📍 1, rue de la Paix - 37800 Maillé
- 🌐 [www.maisondusouvenir.fr](http://www.maisondusouvenir.fr)
- 🏠 Located 300 m from Maillé train station



©D. Couineau



## Domaine de Candé

As if out of time, in an unspoiled setting, the Domaine de Candé offers an unusual tour that takes visitors on a journey of discovery through a luxurious, fully furnished chateau and invites them to stroll through the 230 hectares of wooded parkland. Self-guided or guided tours, workshops...

- 📍 Route du Ripault - 37260 Monts
- 🌐 [www.domainecande.fr](http://www.domainecande.fr)
- 🏠 Located 2.7 km from Monts train station



## Family Park

Family Park is an amusement park where you can have fun and relax. Try out the Family Coaster: the joys of roller coasters with the whole family for an introduction to the Roller Coaster. The Gold Rush is a train that comes from the gold mine; it will give you the thrill of a lifetime. You can also take in the sights of the park on the Ferris wheel. At a height of 30 metres, it's accessible to all the family.

- 📍 Le petit Netilly - 37250 Sorigny
- 🌐 [www.familypark37.com](http://www.familypark37.com)
- 🚗 Access by bus Rémi 37, line F, departure from Tours bus station



©FamilyPark

The Domaine de Candé is also the venue for the Terres du Son festival, which is served by Rémi trains and coaches at very competitive prices.



EN FAMILLE OU ENTRE AMIS

# ÉVADEZ-VOUS EN RÉGION CENTRE VAL DE LOIRE

Avec le pass  
**Rémi**  
Découverte Plus\*

**95€ /  
GROUPE  
2J**



## On y va avec Rémi ! Et vous ?

\*Le Pass Rémi Découverte Plus est valable pour un groupe, jusqu'à 5 personnes. Voyages en illimités sur les trains et cars Rémi en Centre-Val de Loire et vers l'Île de France : 95 €/ groupe pour 2 jours et 120 €/ groupe pour 3 jours.

LA RÉGION ORGANISE VOS DÉPLACEMENTS  
EN CENTRE VAL DE LOIRE

[www.remi-centrevalde Loire.fr](http://www.remi-centrevalde Loire.fr)

**Rémi**



Centre-Val de Loire

RÉSEAU DE MOBILITÉ INTERURBAINE





AT THE HEART OF THE STAR  
**OF ORLÉANS**

---

# Discovering Orléans and the surrounding area



## Les Guinguettes

Come and relax on the banks of the Loire at the many Guinguettes d'Orléans. Friendly guinguettes with a musical atmosphere.

- 📍 **Le Boui Boui: Capitainerie, quai du fort Alleaume**  
**La plage du BDL: 14, quai du Châtelet**  
**Le Ponton: 34, quai du Châtelet**  
45000 Orléans
- 🏠 Located 1.6 km from Orléans train station



© IlMaury

## Orléans

Located between the châteaux of the Loire and Paris (1 hour by train), Orléans is a destination on a human scale, ideally located on the royal river. The city of Joan of Arc boasts a wealth of historical and heritage assets that have made its reputation. With its winding cobbled streets, magnificent Gothic cathedrals and enchanting medieval atmosphere, this city offers a captivating experience around every corner. It is also a vibrant, contemporary city, where art, culture and gastronomy thrive. The bustling streets of the city centre are full of quaint boutiques, lively cafés and delicious restaurants.

- 📍 **Orléans Val de Loire tourisme**  
23 place du Martroi – CS 95632  
45056 Orléans cedex
- 🌐 **www.tourisme-orleans**  
metropole.com
- 🏠 Located 750 m from Orléans train station



## Cycling along the Orléans canal, on the banks of the Loire

Hire a bike in Orléans and pedal east to Combleux, a charming town anchored between the Loire and the Orléans Canal, in less than half an hour (6.6 km). With its low houses and old lock, you'll be able to guess that it was once a seafaring town. You can stop for a bite to eat at the delightful La Marine restaurant, where you're guaranteed a breathtaking view of the lock. Discover many other day cycling routes from Orléans.

- 🌐 [www.loiravelo.fr/suggestion/une-journee-orleans/](http://www.loiravelo.fr/suggestion/une-journee-orleans/)

## Musée des Beaux-arts

A first museum opened to the public in Orléans in 1799, but it was not until 30 November 1823 that the city of Orléans announced the creation of a proper museum, which opened in November 1825. More than 1,200 works are presented in a colourful chronological display, taking visitors on a journey through time. Two pastel cabinets and four graphic arts cabinets showcase the 13,000 drawings and 50,000 prints in rotation. Every year, the museum organises national exhibitions and offers a rich programme of events.

- 📍 Place Sainte-Croix - 45000 Orléans
- 🌐 [www.orleans-metropole.fr/culture/musees-expositions/](http://www.orleans-metropole.fr/culture/musees-expositions/)
- 🏠 Located 950 m from Orléans train station

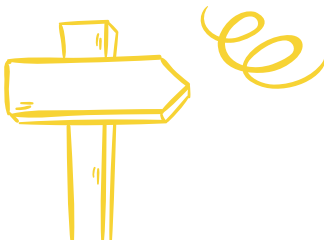


©IMaury

## Sainte-Croix d'Orléans cathedral

Welcome to Orléans Cathedral, one of the city's architectural gems, steeped in history, spirituality and grandeur. Come and discover the artistic and religious treasures it houses, as well as captivating tales of its close connection with Joan of Arc, who prayed here before leading Orléans to victory in the Hundred Years' War.

- 📍 Place Sainte-Croix - 45000 Orléans
- 🏠 Located 950 m from Orléans train station



©Mutschler

## Parc Floral de la Source

To the south of Orléans is a magnificent park: the Parc Floral de La Source. Here you can discover the gushing spring of the Loiret, for a zen atmosphere, on an armchair or lying on the grass, for a picnic or a walk... You'll find a mini-farm, a butterfly hothouse, exotic birds, a vegetable garden, sculptures, a rose garden and many varieties of flowers. Last but not least, enjoy a fun-filled family outing on the little train or rosalie.

- 📍 Avenue du parc floral - 45000 Orléans
- 🏠 From Orléans station, take the tram or the Tao network bus. 200m from the Parc Floral stop.



©UnMendeVelo

# To Pithiviers

## Musée lieu de mémoire de la Shoah

Discover Pithiviers railway station, a museum and place of remembrance of the Holocaust. Between 1941 and 1943, almost 16,000 Jews were interned in the Beauce-la-Rolande and Pithiviers camps, from where 8 rail convoys left for Auschwitz-Birkenau. An original museography between history and memory.

- 📍 Place de la Gare - 45300 Pithiviers
- 🌐 [www.memorialdelashoah.org](http://www.memorialdelashoah.org)
- 🏠 Situé dans la gare de Pithiviers
- 🚗 Access by Car Rémi 45 - line 20A, departure from Orléans bus station



©DDarrault

## Chocolaterie Alex Olivier

Welcome to the gourmet world of Alex Olivier, Master Chocolatier since 1927! Located in Neuvilleaux-bois, the Alex Olivier chocolate factory invites you to discover unique recipes based on French know-how! From milk chocolate for sweetness to dark chocolate for flavour lovers, you'll find all the flavours you're looking for in bars, rochers and spreads.

- 📍 4, rue de l'Ardoisière - 45170 Neuville-aux-Bois
- 🌐 [www.alexolivier.fr](http://www.alexolivier.fr)
- 🚗 Access by Car Rémi 45 - line 20A, departure from Orléans bus station



## Musée des transports

The Musée des Transports de Pithiviers, located in the heart of the Beauce region, offers you a real journey back in time, on board its historic trains. Whether you're travelling on diesel or steam traction, the round trip by train and the associated visit to the museum will take you back in time to the 20<sup>th</sup> century for 2 hours.

- 📍 Rue Carnot - 45300 Pithiviers
- 🌐 [www.amtp-cfpithiviers.com](http://www.amtp-cfpithiviers.com)
- 🚗 Access by Car Rémi 45 - line 20A, departure from Orléans bus station

## Jardin personnel d'André Eve

André Eve's 1500 m<sup>2</sup> personal garden is an intimate garden known the world over. It was here that he began collecting old roses in 1980.

- 📍 28, bis faubourg d'Orléans - 45300 Pithiviers
- 🌐 [www.amisandreeve.fr](http://www.amisandreeve.fr)
- 🚗 Access by Car Rémi 45 - line 20A, departure from Orléans bus station



©MEBeaudin

# To Montargis

## City of Montargis

An hour south of Paris, Montargis is a charming town of 132 bridges and footbridges, made up of small islands, canals and streets on the water, and nicknamed "The Venice of the Gâtinais". It's an exciting stop-off, as you board the Zia, a 58-seater panoramic motorboat. You'll cruise along the Canal de Briare for 2 hours.

- 📍 Office de Tourisme de l'Agglomération de Montargis : 35, rue Renée de France - 45200 Montargis
- 🌐 [www.montargis.fr](http://www.montargis.fr)
- 🏠 Located 1.5 km from Montargis train station
- 🚗 Access by Car Rémi 45 - line 6, departure from Orléans bus station

## Château Royal de Montargis

A royal fortress, a holiday resort, an industrial site and then an open-cast quarry, the Château de Montargis site has a history spanning almost 900 years.

- 📍 2, place du Château - 45202 Montargis
- 🌐 [www.chateaudemontargis.fr](http://www.chateaudemontargis.fr)
- 🏠 Located 2 km from Montargis train station



©OfficeTourisme-Aggl-Montargis

## Musée de la Marine de Loire

The Musée de la Marine de Loire brings to life the epic story of navigation on the Loire, through a dynamic evocation of the life of the bargemen on the river, their boats and their trade, dedicated to transport and trade.

- 📍 1, place Aristide Briand  
45110 Châteauneuf-sur-Loire
- 🌐 [www.musee-marinedeloire.fr](http://www.musee-marinedeloire.fr)
- 🚗 Access by Car Rémi 45 - line 3A, departure from Orléans bus stations



## Les Tanneries

The Tanneries - Centre d'art contemporain is a venue for temporary exhibitions, artists' residencies and in situ creation, as well as a privileged space for exchanges around contemporary artworks and artistic gestures in all their forms, around art in the making.

- 📍 234, rue des Ponts - 45200 Amilly
- 🌐 [www.lestanneries.fr](http://www.lestanneries.fr)
- 🏠 Located 5 km from Montargis train station



## Musée Girodet

Come and discover the work and lives of two local artists of international renown: the painter Anne-Louis Girodet-Trioson (1767-1824) and the sculptor Henry de Triqueti (1803-1874). The museum also has a collection of ancient European art, and preserves many items of Montargis heritage.

- 📍 2, rue du Faubourg de la Chaussée  
45200 Montargis
- 🌐 [www.musee-girodet.fr](http://www.musee-girodet.fr)
- 🏠 Located 1.5 km from Montargis train station



©Musée Girodet F. Louÿs/ML

# To Gien



## Château de Sully-sur-Loire

Majestic, imposing yet austere: this is one of the jewels in the Loiret crown! A medieval fortress built in the 14<sup>th</sup> century in a vast park, this castle in the town marks the entrance to the Loire Valley. Surrounded by a moat and overlooking the Loire, it invites you to discover the life of Maximilien de Béthune.

- 📍 Chemin de la Salle Verte - 45600 Sully-sur-Loire
- 🌐 [www.chateausully.fr](http://www.chateausully.fr)
- 🚗 Access by Car Rémi 45 - line 7A ou 3A, departure from Orléans bus station

## Musée Helyett

An exhibition of bikes and motorbikes retracing the history of the Helyett brand in the old factory at Sully-sur-Loire.

- 📍 6, chemin de la Levée - 45600 Sully-sur-Loire
- 🌐 [www.musee-helyett-sully.fr](http://www.musee-helyett-sully.fr)
- 🚗 Access by Car Rémi 45 - line 7A ou 3A, departure from Orléans bus station

## Château-Musée de la chasse

Built in the 15<sup>th</sup> century by Anne de Beaujeu, daughter of Louis XI, the Château de Gien abandoned the defensive aspect of the medieval period in favour of Renaissance comfort. Since 1952, the château has been home to the Hunting Museum.

- 📍 1, place du Château - 45500 Gien
- 🌐 [www.chateaumuseegien.fr](http://www.chateaumuseegien.fr)
- 🏠 Located 1.6 km from Gien train station
- 🚗 Access by Car Rémi 45 - line 3B, departure from Orléans bus station





©D. Darrault

**A must!**

### Pont canal de Briare

France's largest metal canal bridge is 662 metres long, lined with 72 lampposts and framed by superb pilasters decorated with coats of arms at each end.

The canal bridge is one of the most prestigious structures in France's river heritage, and is a unique part of our national heritage and an attractive feature of the region.

- 📍 45250 Briare
- 🏠 Located 1.9 km from Briare train station
- 🚗 Access by Car Rémi 45 - line 3C, departure from Orléans bus station



©C. Moulton

### Musée de la Faiencerie

To mark the 200<sup>th</sup> anniversary of the Gien earthenware factory, the museum has undergone a facelift: with more collections and a more interactive approach, the new earthenware museum has over 400 m<sup>2</sup> of exhibition space and a resolutely modern scenography!

- 📍 78, place de la Victoire - 45500 Gien
- 🌐 [www.gien.com/fr/musee-fr](http://www.gien.com/fr/musee-fr)
- 🏠 Located 2 km from Gien train station
- 🚗 Access by Car Rémi 45 - line 3B, departure from Orléans bus station

### Musée des 2 marines

Imagine yourself 200 years ago, when bargemen, barges, casks and goods travelled from the Loire to the canals to supply the country's biggest cities.

- 📍 58, boulevard Buyser - 45250 Briare
- 🌐 [www.musee-2-marines.com](http://www.musee-2-marines.com)
- 🏠 Located 350 m from Briare train station
- 🚗 Access by Car Rémi 45 - line 3C, departure from Orléans bus station



©C.Moulton

# To the Sologne

## Passion Équitation

If you're a horse and pony lover, you'll find everything you need for an unforgettable equestrian adventure, from beginners to more sporty riders. A family club for over thirty years.

- 📍 6 rue de Concyr - 45590 Saint-Cyr-en-Val
- 🌐 [www.poney-club-orleans.fr](http://www.poney-club-orleans.fr)
- 🏠 Located 1.6 km from Saint-Cyr-en-Val train station or accessible by the Tao bus network



## Château de la Ferté-Saint-Aubin

Discover a different kind of Loire château: 15 furnished rooms to visit with your family or friends, stables, park, garden games, an attic full of old toys, entertainment and tastings in the château's historic kitchens. From May to September, try the Parcours des Poisons, a riddle and adventure race in the Château grounds!

- 📍 2-4, rue du Général Leclerc  
45240 La Ferté-Saint-Aubin
- 🌐 [www.chateau-ferte.com](http://www.chateau-ferte.com)
- 🏠 Located 700 m from Ferté-Saint-Aubin train station

## Maison Tatin

This large 19<sup>th</sup>-century building once belonged to the Tatin sisters, creators of the famous Tarte, and is located in the heart of the Sologne region. La Maison Tatin welcomes you in a warm and authentic atmosphere for a unique moment of relaxation.

- 📍 5, avenue de Vierzon - 41600 Lamotte-Beuvron
- 🌐 [www.lamaisontatin.fr](http://www.lamaisontatin.fr)
- 🏠 Located 57 m from Lamotte-Beuvron train station



The Château de la Ferté is also home to the Cocorico Electro festival, which is served directly by Rémi trains and coaches at a special price.





# To Beaugency

## Château de Meung-sur-Loire

Meet the dragon and his legend - a great family adventure! Discover the dragon trail, the Minimes farm, walk the nets suspended in the park, visit the castle from the attics to the underground!

- 📍 16, place du Martroi 45130 Meung-sur-Loire
- 🌐 [www.chateau-de-meung.com](http://www.chateau-de-meung.com)
- 🏠 Located 800 m from Meung-sur-Loire train station



©Château de Meung



© P. Pargolle

## Guinguette la Capitainerie

La Capitainerie is a friendly place on the banks of the Loire in Meung-sur-Loire. Over a drink or some local produce, you'll be able to contemplate the breathtaking view over the Loire.

- 📍 8, quai Jeanne d'Arc 45130 Meung-sur-Loire
- 🏠 Located 1,2 km from Meung-sur-Loire train station



© Ca. Meitken

## City of Beaugency

Beaugency's remarkably well-preserved historic centre is full of architectural marvels that will delight you: listed monuments bearing witness to a prestigious past, elaborate facades and picturesque streets that look like an open-air history book.

- 📍 Office de Tourisme des Terres du Val de Loire  
Hôtel de ville  
20, rue du change - 45190 Beaugency
- 🌐 [www.tourisme-terresduvaldeloire.fr](http://www.tourisme-terresduvaldeloire.fr)
- 🏠 Located 450 m from Beaugency train station

## Château de Beaugency

It's a journey into a luminous digital universe, where architecture reveals itself in a place with many lives. A château transformed into a digital art centre for a unique experience. For young and old alike, the digital art exhibition offers a different take on heritage.

- 📍 2, place Dunois - 45190 Beaugency
- 🌐 [www.chateau-beaugency.com](http://www.chateau-beaugency.com)
- 🏠 Located 700 m from Beaugency train station



© ThomasHENNEQUIN

AVEC LA RÉGION  
SUR **YEPS.FR** TU T'INSCRIS  
ET LES TRANSPORTS Rémi  
SONT **GRATUITS**  
LES WEEK-ENDS ET  
JOURS FÉRIÉS

POUR LES  
15-25 ANS



uam!

**NOUVEAU**

**GRÂCE À TA CARTE RÉMI YEP'S CENTRE-VAL DE LOIRE,  
OBTIENS TES BILLETS DE TRAINS OU CARS RÉMI  
DANS LES POINTS DE VENTE HABITUELS POUR  
VOYAGER GRATUITEMENT LES SAMEDIS, DIMANCHES  
ET JOURS FÉRIÉS ET À MOITIÉ PRIX EN SEMAINE.**

Le nombre de places gratuites pour les jeunes est limité par train afin de permettre à tous les clients de voyager.  
Conditions d'obtention des billets sur [yeps.fr](http://yeps.fr)



+ D'INFOS



LA RÉGION ACCOMPAGNE  
LES JEUNES AU QUOTIDIEN

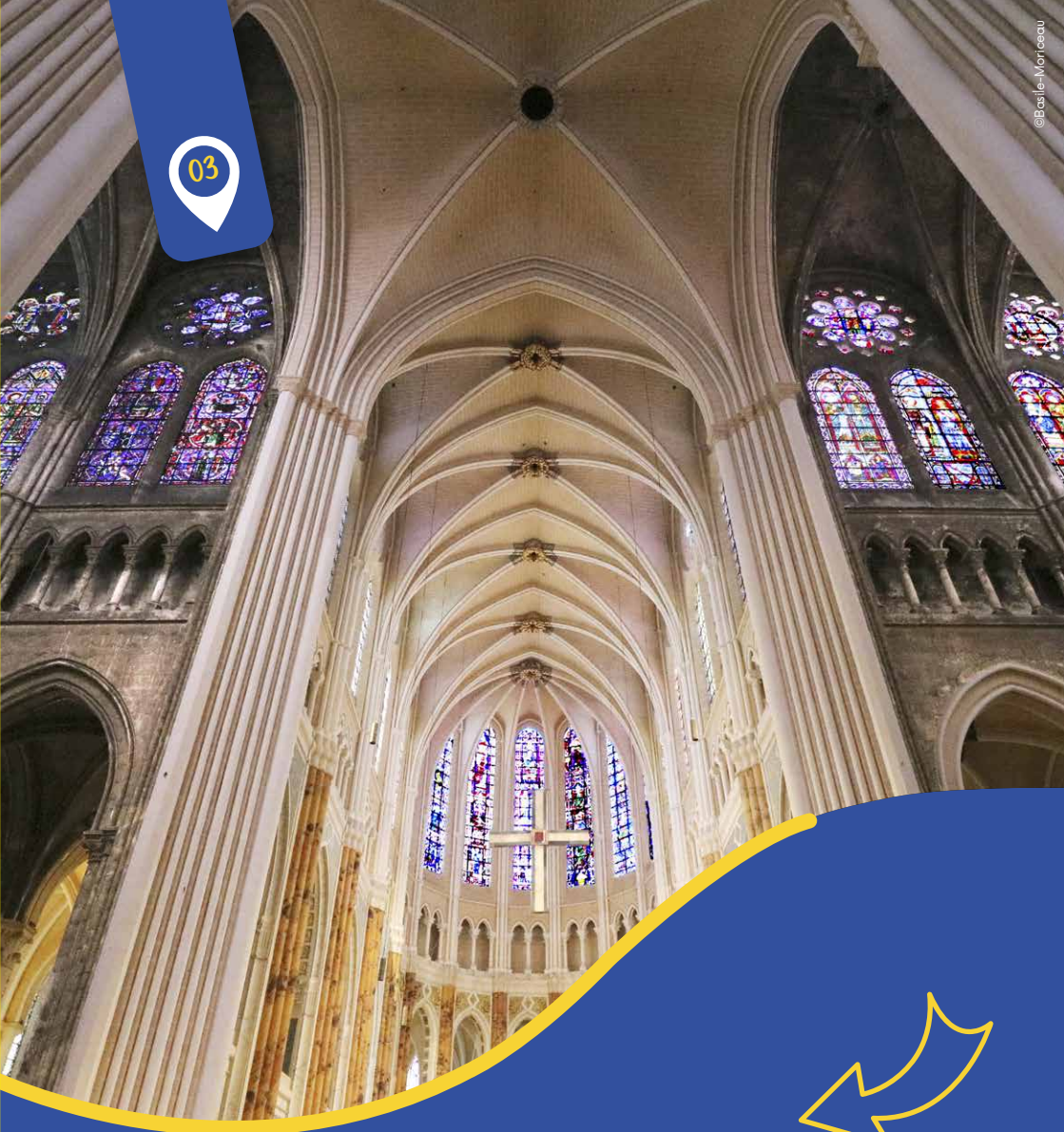
[centre-valde Loire.fr](http://centre-valde Loire.fr)

**YEPS**  
LE PASS DES JEUNES EN CENTRE-VAL DE LOIRE

RÉGION  
CENTRE  
VAL DE LOIRE



03



AT THE HEART OF THE STAR  
**OF CHARTRES**

---

# Discovering Chartres and the surrounding area

## Chartres

Chartres la belle, capital of the Eure-et-Loir département, is an old medieval town on the banks of the Eure, where bridges and wash-houses wind their way through the lower town. Built on a hill overlooking a sea of wheat, Chartres Cathedral stands like a medieval jewel.

Chartres is also the international capital of stained glass, with its Centre International du Vitrail and its various master glassmakers' workshops. Every evening from April to January, as night falls, Chartres lights up with Chartres en Lumières, a free, not-to-be-missed event in which more than twenty buildings are illuminated for a grandiose spectacle.

- 📍 **Office du Tourisme de Chartres Métropole**  
8, rue de la Poissonnerie  
28000 Chartres
- 🌐 [www.chartres-tourisme.com](http://www.chartres-tourisme.com)
- 🏠 Located 800 m from Chartres train station

## Accrocamp

The Accrocamp park, located in the city centre just a stone's throw from the cathedral, is the first urban park to have been designed with a real desire to blend in with its surroundings, creating an interesting link between the garden and the city.

- 📍 **Parc André Gagnon**  
6, place St Jean - 28000 Chartres
- 🌐 [www.accrocamp.com](http://www.accrocamp.com)
- 🏠 Located 350 m from Chartres train station



## Compa - Le Conservatoire de l'agriculture



France's first museum dedicated to agriculture, Compa is a museum of society, science and technology, helping visitors to find their bearings in a (r)evolving rural world. At Compa, there's no set itinerary, just areas to explore as you please.

- 📍 1 rue de la République - 28300 Mainvilliers
- 🌐 [www.lecompa.fr](http://www.lecompa.fr)
- 🏠 Located 550 m from Chartres train station

## Musée des Beaux-Arts

### Palais épiscopal

The Palais houses the Musée des Beaux-Arts with its many collections of paintings (Zurbaran, Chardin, Soutine, an important Vlaminck collection... And many other surprises), sculptures, enamels and also a collection of glass objects by Henri Navarre.

📍 29, cloître Notre-Dame - 28000 Chartres  
🏠 Located 850 m from Chartres train station



## Centre International du Vitrail

The stained glass museum at the Cellier de Loëns houses a unique collection of original stained glass from the Renaissance period. Stained glass windows by contemporary artists are on display in one of France's most remarkable Gothic halls, a 13<sup>th</sup>-century building listed as a Historic Monument.

📍 5, rue du Cardinal Pie  
28000 Chartres  
🌐 [www.centre-vitrail.org](http://www.centre-vitrail.org)  
🏠 Located 800 m  
from Chartres train station



## Maison Picassiette

Pieces of broken crockery give rise to an extraordinary work of Art Brut: the Picassiette house. Somewhere between a total work of art and interior design, the artist's imagination took in every possible surface: walls, floors, ceilings, courtyards, gardens, etc. Only the size of the land seemed to limit his creativity. Only the size of the site seems to have limited the artist's creativity.

📍 2, rue du Repos - 28000 Chartres  
🌐 [www.maison-picassiette-chartres.com](http://www.maison-picassiette-chartres.com)  
🏠 Located 2 km from Chartres train station

## Cathédrale de Chartres

Welcome to Notre-Dame de Chartres Cathedral, the French Gothic monument par excellence. A sanctuary more alive than ever, where an exceptional building that invites contemplation is combined with a wide range of activities, rich in spiritual impetus and human encounters.

📍 16 Cloître Notre Dame - 28000 Chartres  
🌐 [www.cathedrale-chartres.org/](http://www.cathedrale-chartres.org/)  
🏠 Located 650 m from Chartres train station





# To Épernon

## Château de Maintenon

Maintenon is a château on a human scale, delicately nestled in a formal garden designed by Le Nôtre, who drew up the original plans, and opening onto the majestic remains of Vauban's aqueduct, the royal military engineer's only civil work.

- 📍 Place Aristide Briand - 28130 Maintenon
- 🌐 [www.chateaudemaintenon.fr](http://www.chateaudemaintenon.fr)
- 🚉 Located 1.4 km from Maintenon train station



© J-Martrou

## Brasserie Terra

The Terra brewery creates beers with character, craft beers using high-quality, environmentally-friendly products. This microbrewery is keen to share its passion with other beer lovers, and can even help you create your own personalised beer.

- 📍 7, rue de la Billardièrre - 28230 Épernon
- 🌐 [www.brasserieterra.fr](http://www.brasserieterra.fr)
- 🚉 Located 1.5 km from Épernon train station



© Ville d'Épernon

## City of Épernon

Épernon is a jewel of a town, steeped in history and boasting a remarkable architectural heritage. It boasts many architectural marvels, including the emblematic Château d'Épernon, Saint-Pierre church and the half-timbered houses that line the picturesque streets of the town centre.

- 📍 Office de Tourisme des Portes Euréliennes  
1, rue Bourgeoise - 28230 Épernon
- 🌐 [www.tourismeporteseureliennes.fr](http://www.tourismeporteseureliennes.fr)
- 🚉 Located 650 m from Épernon train station

## Conservatoire des Meules

The museum is housed in a former 19<sup>th</sup>-century sheepfold and threshing floor that once belonged to the Normandy village that stood at the foot of the Eiffel Tower during the 1900 exhibition. The conservatory is a moving testimony to the work and social life of quarrymen in the last century.

- 📍 23 avenue de la Prairie - 28230 Épernon
- 🚉 Located 1.5 km from Épernon train station



© Eure-et-Loire Tourisme

# To Châteaudun



## Musée des beaux-arts et d'histoire naturelle

Let yourself be guided by the diversity and richness of the museum's collections. You'll travel through time and to every continent: ancient Egypt, the katagamis of Japan, the heroic struggle of the Dunes against the Prussians in 1870... and admire the ornithological collection.

- 📍 3, rue Toufaire - 28200 Châteaudun
- 🌐 [www.chateaudun-tourisme.fr](http://www.chateaudun-tourisme.fr)
- 🏠 Located 900 m from Châteaudun train station

## Château de Châteaudun

A large princely residence dating from the 12<sup>th</sup>, 15<sup>th</sup> and 16<sup>th</sup> centuries, once owned by Jehan de Dunois, Joan of Arc's comrade-in-arms. It is a spectacularly large building, with a succession of exceptionally authentic medieval, Gothic and Renaissance architectural features.

- 📍 Place Jehan de Dunois - 28200 Châteaudun
- 🌐 [www.chateau-chateaudun.fr](http://www.chateau-chateaudun.fr)
- 🏠 Located 1.3 km from Châteaudun train station



## Bonneval

Discover this small medieval town on foot, by electric boat or in a horse-drawn carriage. Bonneval is a fortified village that has managed to preserve its identity. Around the fortifications of the historic town centre, the Loir flows through the moats.

- 📍 Office de Tourisme du Bonnevalais :  
1, rue du Bas de l'Église - 28800 Bonneval
- 🌐 [Otdubonnevalais.com](http://Otdubonnevalais.com)
- 🏠 Located 750 m from Bonneval train station



Unusual!

## Grottes de Foulon

Natural limestone caves carved out millions of years ago by run-off water, the Grottes de Foulon are prehistoric caves inhabited as far back as the Lower Palaeolithic, 300,000 years ago. They are the only caves in the world where visitors can see thousands of marine quartz and chalcedony geodes.

- 📍 35, rue des Fouleries  
28200 Châteaudun
- 🌐 [www.ville-chateaudun.com](http://www.ville-chateaudun.com)
- 🏠 Located 700 m from Châteaudun train station



# To Perche and Beauce

## Château des Comtes du Perche

Le musée de l'histoire du Perche retrace mille ans d'histoire, de l'Épopée des Rotrou à la Révolution Française. Suivez Rotrou IV, Richard Cœur de Lion, Philippe Auguste, les Bourbons-Condé et les Sully. Découvrez les artistes ayant contribué au rayonnement du Perche: Camille Silvy, Louis Moullin, Clara Filleul...

- 📍 1, place Émile Maquaire  
28400 Nogent-le-Rotrou
- 🌐 [www.ville-nogentlerotrou.fr](http://www.ville-nogentlerotrou.fr)
- 🏠 Situé à 1,8 km de la gare de Nogent-le-Rotrou



©Mairie de La Loupe



## Château de La Loupe

Push open the doors of Château de La Loupe and dive into the Caves de l'Histoire: a fun, historic and incredible experience in the heart of the Perche region. Step back in time and discover the 500m<sup>2</sup> cellars and museum.

- 📍 Place Vauban, 28240 La Loupe
- 🌐 [Lechateaualoupe.fr](http://Lechateaualoupe.fr)
- 🏠 Located 850 m from La Loupe train station

## Musée Marcel Proust / Maison de tante Léonie à Combray

Aunt Léonie's house was a veritable haven of peace for the young Marcel Proust. It was in this house that Aunt Léonie ritually offered the madeleine that would, years later, bring back memories of holidays in Combray. This house brings together the many memories associated with the writer.

- 📍 19, rue de Chartres - 28120 Illiers-Combray
- 🌐 [www.amisdeproust.fr](http://www.amisdeproust.fr)
- 🏠 Located 450 m from Illiers-Combray train station



©Ville de Nogent-le-Rotrou

# DÉCOUVRE LA RÉGION À VÉLO AVEC *Rémi* !



LA RÉGION ORGANISE VOS DÉPLACEMENTS  
EN CENTRE VAL DE LOIRE  
[www.remi-centrevalde Loire.fr](http://www.remi-centrevalde Loire.fr)

**Rémi** |   
Centre-Val de Loire  
RÉSEAU DE MOBILITÉ INTERURBAINE

04



AT THE HEART OF THE STAR  
**OF BLOIS**

# Discovering Blois and the surrounding area

© D. Léplissier

## Blois

Blois is the ideal place to take a stroll in a charming setting steeped in history. Full of staircases, slopes and ascents, you'll discover the pedestrianised streets lined with half-timbered houses. Discover the town centre, its medieval streets and its town houses in the company of a guide accredited by the Ministry of Culture. If you're on your own, follow the little bronze studs that will guide you to one of the 4 circuits!

- 📍 Office de Tourisme de Blois-Chambord  
5, rue de la Voûte du Château,  
41000 Blois
- 🌐 [www.blois.fr](http://www.blois.fr)
- 🏠 Located 600 m from Blois-Chambord train station



**Coach shuttles depart from Blois bus station to the Châteaux de Chaumont, Chambord, Cheverny and the ZooParc de Beauval.**



### Château Royal de Blois

Drama, intrigue and power plays: the château tells the story of illustrious characters. Richly furnished and decorated, it offers uninterrupted views over the city and the Loire. When night falls, enjoy an unforgettable experience: sound effects and video projections on the façades for a spellbinding sound and light show.

- 📍 6, place du Château - 41100 Blois
- 🌐 [www.chateaublois.fr](http://www.chateaublois.fr)
- 🏠 Located 600 m from Blois train station



### Maison de la Magie

The only one of its kind in Europe, the Maison de la Magie in Blois is the only public museum to present in one place collections of magic and permanent live shows, which are the DNA of this art form. Be amazed by the dragons that appear from the windows of this grand bourgeois house.

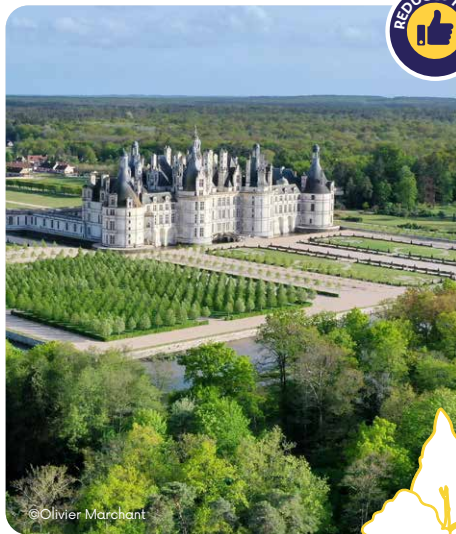
- 📍 Place du Château - 41000 Blois
- 🌐 [www.maisondelamagie.fr](http://www.maisondelamagie.fr)
- 🏠 Located 600 m from Blois train station



## Le domaine national de Chambord

A UNESCO World Heritage Site since 1981, the Château de Chambord is one of the most stunning buildings of the Renaissance. More than 80 rooms are open to visitors, as is the famous double spiral staircase inspired by the work of Leonardo da Vinci. Travel through 500 years of history in the footsteps of François I, Louis XIV, Molière, Victor Hugo and many others!

- 📍 41250 Chambord
- 🌐 [www.chambord.org](http://www.chambord.org)
- 🚌 Access by Rémi shuttle bus 41 - line 2, departure from Blois-Chambord bus station



## Fondation du doute

The Fondation du Doute is a unique space dedicated to contemporary art and the Fluxus movement, with a programme of temporary exhibitions throughout the year. This original space is a lively place for learning, expressing and discussing art. The Fluxus café is a real place of conviviality at the heart of the foundation.

- 📍 Rue de la Paix - 41000 Blois
- 🌐 [www.fondationdudoute.fr](http://www.fondationdudoute.fr)
- 🚶 Located 800 m from Blois train station



## Château de Cheverny

Château de Cheverny is one of the most magnificently furnished châteaux in the Loire Valley. Still inhabited by the same family, it is open 365 days a year. In addition to the renown of the château, we must add that of its gardens.

- 📍 Avenue du Château - 41700 Cheverny
- 🌐 [www.chateau-cheverny.fr](http://www.chateau-cheverny.fr)
- 🚌 Access by Azalys shuttle bus, departing from Blois-Chambord bus station



# To Onzain-Chaumont

## La Madeleine de Proust

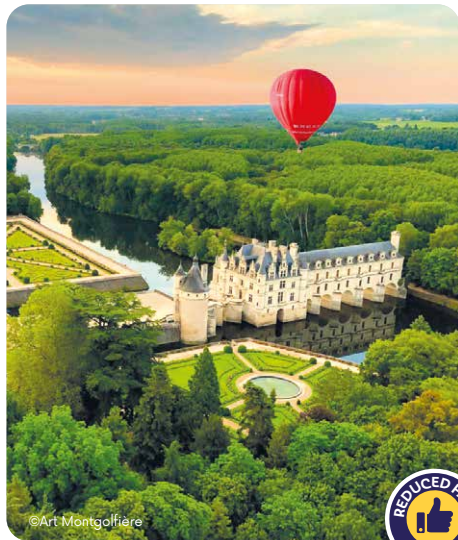
A restaurant serving traditional cuisine, prepared with fresh seasonal produce. You'll enjoy a warm and friendly atmosphere. Located in the town centre and close to the Chaumont-sur-Loire estate, this is the place to go for home-cooked meals accompanied by Loire wines.

- 📍 31-33, rue Maréchal Leclerc  
41150 Chaumont-sur-Loire
- 🌐 [www.lamadeleinedeproust.eatbu.com](http://www.lamadeleinedeproust.eatbu.com)
- 🚶 Located 1.4 km from Onzain train station

## Domaine de Chaumont-sur-Loire

The Domaine de Chaumont-sur-Loire overlooks the Loire, a UNESCO World Heritage site. The estate comprises three entities covering 32 hectares: the Arts and Nature Centre, the International Garden Festival and the château. In 2024, the jury has selected around thirty projects on the theme of "The Garden, Source of Life".

- 📍 41150 Chaumont-sur-Loire
- 🌐 [www.domaine-chaumont.fr](http://www.domaine-chaumont.fr)
- 🚶 Located 2 km from Onzain train station
- 🚌 Access by Azalys shuttle bus, departing from Blois or Onzain bus station



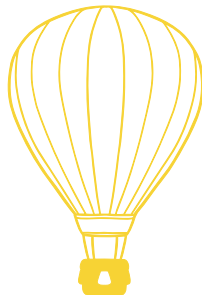
©Art Montgolfières



## Art montgolfières

For 15 years now, we've been sharing our passion with our passengers on a daily basis. Do you dream of flying too? Climb aboard one of our balloons and, guided by the wind, let yourself be swept away by this unique sensation of freedom! A magical adventure to discover Touraine!

- 📍 9, le petit Villeneuve  
41140 Saint-Georges-sur-Cher
- 🌐 [www.art-montgolfieres.fr](http://www.art-montgolfieres.fr)
- 🚶 Meeting point 2 km from Onzain-Chaumont station



# To Romorantin

## Musée de la Sologne

Situated in an exceptional setting in the heart of Romorantin-Lanthenay, the Musée de Sologne is housed in three old mills on the Sauldre linked by a footbridge. Discover the history, natural environment, architecture and traditions of this unique and fascinating region.

- 📍 **Moulin du Chapitre: Quai de l'île Marin**  
41 206 Romorantin-Lanthenay
- 🏠 **Located à 550 m from**  
Romorantin-Lanthenay train station
- 🚗 **Access by Car Rémi 41 - line 4, departure**  
from Blois bus station



*A must-see!*

## Observatoire Loire de Blois

Fishing room, interactive educational workshops to help you understand the Loire (Loire marine/flooding/ecological continuity/landscapes). Maps, videos, models, games, illustrations... Two unique balconies overlooking the river.

- 📍 **Levée de La Loire: Parc des Mées**  
41260 La Chaussée-Saint-Victor  
[www.observatoireloire.fr](http://www.observatoireloire.fr)
- 🏠 **Located 2 km from Chaussée-**  
Saint-Victor train station



## La Guinguette du Domino

While you're out and about on the Loire cycle route, treat yourself to a relaxing gourmet break at the Domino guinguette. You'll love the peaceful setting for a romantic meal, a family snack with a board game, a drink with friends or a concert evening...

- 📍 **Lieu-dit Le Domino - 41500 Suèvres**
- 🏠 **Located 3 km from Suèvres train station**



# VOYAGEZ PLUS, PLUS, DÉPENSEZ MOINS!

AVEC  
LES CARTES  
RÉMI LIBERTÉ

Économisez

jusqu'à **-80%**

pendant 1 an



LA RÉGION ORGANISE VOS DÉPLACEMENTS  
EN CENTRE VAL DE LOIRE  
[www.remi-centrevalde Loire.fr](http://www.remi-centrevalde Loire.fr)

**Rémi** |   
Centre-Val de Loire  
RESEAU DE MOBILITÉ INTERURBAINE

**SNCF**  
VOYAGEURS



05

© ADTindre



AT THE HEART OF THE STAR  
**OF CHÂTEAURoux**

---

# Discovering Châteauroux and the surrounding area

## Châteauroux

Accompanied by qualified guides, discover the city and its heritage: discovery, unusual and medieval routes for adults and educational routes for children. With its rich cultural and architectural heritage, Châteauroux is a delightful little tourist town to visit with the whole family. Olympic host venue for the shooting and Paralympic para-shooting events at the Paris 2024 Games.

- 📍 Office de tourisme de Châteauroux: 2, place de la République - 36000 Châteauroux
- 🌐 [www.chateauroux-tourisme.com](http://www.chateauroux-tourisme.com)
- 🏠 Located 800 m from Châteauroux train station

### Église Saint-André

Saint-André church in Châteauroux is a neo-Gothic church dating from the late 19<sup>th</sup> century, whose proportions (87 m long, 33 m wide and 68 m high with its double spires) often earn it the nickname of "cathedral".

- 📍 Place Voltaire - 36000 Châteauroux
- 🌐 [www.diocese-bourges.org](http://www.diocese-bourges.org)
- 🏠 Located 300 m from Châteauroux train station

### Église Notre-Dame

Notre-Dame de Châteauroux church dates back to 1882. Topped by a gilded Virgin Mary, it combines Romanesque and Byzantine influences, symbolising the eclecticism in vogue at the time.

- 📍 Rue Amiral Ribourt - 36000 Châteauroux
- 🌐 [www.chateauroux-tourisme.com](http://www.chateauroux-tourisme.com)
- 🏠 Located 1 km from Châteauroux train station



©Musée de chateauroux



### Musée Bertrand

In the heart of the historic district of Châteauroux, the Bertrand museum is housed in a private mansion built in 1770, listed as a Monument Historique. It is the former family home of General Henri-Gatien Bertrand (1773-1844), Grand Marshal of the Palace under the Empire, and a loyal companion in arms and at heart to Napoléon.

- 📍 2, rue descente des Cordeliers  
36000 Châteauroux
- 🌐 [www.chateauroux-metropole.fr/sepanouv/culture/musee-bertrand](http://www.chateauroux-metropole.fr/sepanouv/culture/musee-bertrand)
- 🏠 Located 700 m from Châteauroux train station



# To Issoudun

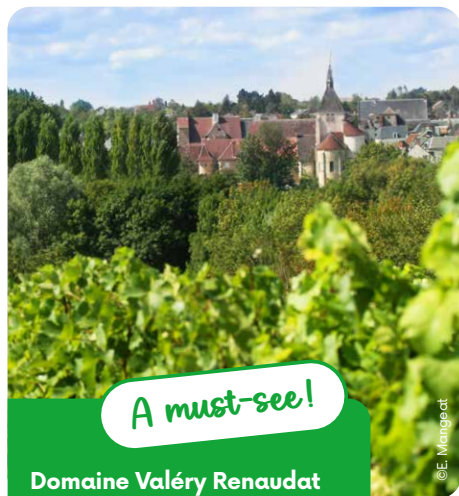
## La Tour blanche

In the 12<sup>th</sup> century, Issoudun was the scene of battles between Richard the Lionheart and Philippe Auguste. They left behind a unique keep in the heart of the town. A contemporary scenography invites you to rediscover the history and poetry of the monument.

- 📍 Office de Tourisme du pays d'Issoudun
- 🌐 [www.tourblanche-issoudun.org](http://www.tourblanche-issoudun.org)
- 🏠 Located 300 m from Issoudun train station



©YD\_Ville d'Issoudun



A must-see!

©E. Mengeat

## Domaine Valéry Renaudat

A thirty-hectare estate with vines producing Sauvignon, Pinot Noir and Pinot Gris grapes. Our appellations are as follows: Reuilly and Quincy AOC and Loire Pinot Noir, Pinot Gris and Sauvignon IGP. Between tradition and modernity, discover wines produced with respect for the terroir. Sustainable agriculture is one of the estate's priorities, as is respect for the terroirs.

- 📍 3, place des écoles  
36260 Reuilly
- 🌐 [www.valeryrenaudat.fr](http://www.valeryrenaudat.fr)
- 🏠 Located 500 m from Reuilly-Indre train station

## Le Brocéliande

Le Brocéliande is a restaurant located in the heart of the Champagne Berrichonne region, in Issoudun. Relaxed bistro atmosphere, traditional cuisine.

- 📍 14, Faubourg de la Croix Rouge - 36100 Issoudun
- 🏠 Located 1 km from Issoudun train station

## Musée de l'Hospice Saint-Roch

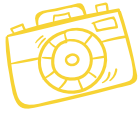
The museum covers 3,000 m<sup>2</sup> of exceptional historical and medical heritage. Its chapel and 2 monumental sculptures of the Trees of Jesse (late 15<sup>th</sup> century) are unique in Europe. The modern section houses collections of non-European and contemporary art. A sculpture park with 18 contemporary works was created in 2020.

- 📍 Rue de l'Hospice Saint-Roch - 36100 Issoudun
- 🌐 [museeissoudun.tv](http://museeissoudun.tv)
- 🏠 Located 850 m from Issoudun train station



©MHSR

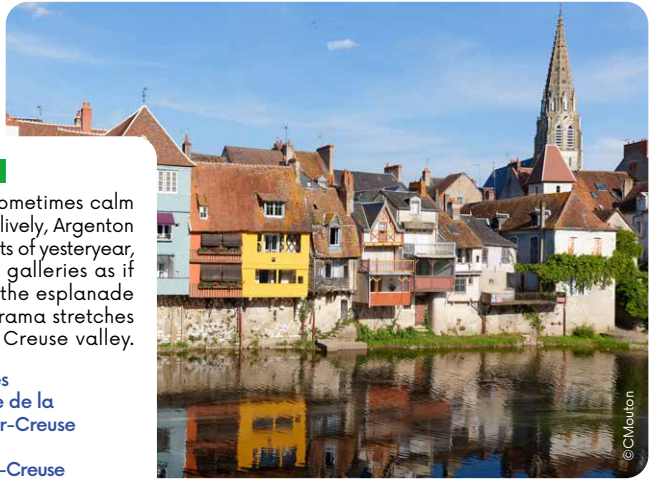
# To the Berry



## City of Argenton-sur-Creuse

To the rhythm of the river Creuse, sometimes calm and serene, sometimes swirling and lively, Argenton reveals itself through the narrow streets of yesteryear, old windmills, houses with wooden galleries as if suspended above the river... From the esplanade de la Bonne Dame, a superb panorama stretches out towards the green hills of the Creuse valley.

- 📍 Bureau d'Informations Touristiques d'Argenton-sur-Creuse : 13, place de la République - 36200 Argenton-sur-Creuse
- 🌐 [lavalleedelacreuse.fr](http://lavalleedelacreuse.fr)
- 🚉 Located 500 m from Argenton-sur-Creuse train station



## Maison de George Sand et parc

The writer's house houses furniture and family souvenirs, a puppet show, park and garden, and a large reference bookshop on her work and life. This house, where she wrote most of her work, bears witness to her rich personality and her attachment to nature. A visit here will allow you to walk in the footsteps of the writer and her illustrious guests.

- 📍 2, place Sainte-Anne - 36400 Nohant-Vic
- 🌐 [www.maison-george-sand.fr](http://www.maison-george-sand.fr)
- 🚗 Access by Rémi 36 bus, line F, departure from Châteauroux bus station,



Take advantage of the 2 self-service **Rémi + Autopartage** vehicles parked at Argenton station to discover Gargilèsse-Dampierre, one of France's most beautiful villages, for a day or half-day, or for a dip in the lake at Chambon in Éguzon.

# To the Indre valley

## City of Buzançais

Buzançais, the "town of seven bridges", has a special relationship with water. Three footpaths give you the freedom to explore the surrounding countryside. Thanks to the historical trail, everyone can set off to discover the various witnesses to history. Come and enjoy the beauty and tranquillity of the surrounding countryside.

- 📍 Office du Tourisme de Buzançais  
10, avenue de la République - 36500 Buzançais
- 🌐 [www.buzancais.fr](http://www.buzancais.fr)
- 🏠 Located 700 m from Buzançais train station
- 🚗 Access by Car Rémi 36 - line 800



A must!

## Cité médiévale de Châtillon-sur-Indre and its keep

Come and discover the oldest vaulted cylindrical keep in France. A spectacular view awaits you at the top! Discover the history of this ancient medieval town as you stroll through its charming, authentic streets...

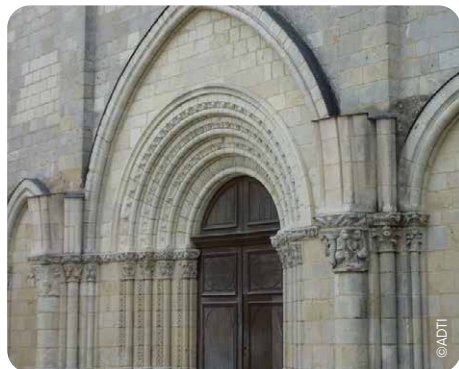
- 📍 5, place du Vieux Château  
36700 Châtillon-sur-Indre
- 🌐 [www.berry-touraine-valde Loire.com](http://www.berry-touraine-valde Loire.com)
- 🏠 Located 230 m from Châtillon place du Mail train station
- 🚗 Access by Car Rémi 36 - line 800

## Eglise Notre-Dame

### Ancienne collégiale Saint-Outrille

Visitors can follow the construction of this remarkable edifice from the beginnings of Romanesque art through to the effervescence of the Gothic period. It stands out for the richness of its sculpted decoration and its Gothic dome in the Angevin style. This Romanesque building, listed as a Historic Monument, is one of the most important medieval churches in the Indre department.

- 📍 27, bis rue du Nord - 36700 Châtillon-sur-Indre
- 🌐 [www.berryprovince.com](http://www.berryprovince.com)
- 🏠 Located 210 m from Châtillon train station



LIGNE RÉMI **TOURS <> BOURGES <> NEVERS**  
DU 29 JUIN AU 1<sup>ER</sup> SEPTEMBRE 2024

Trains spécialement aménagés pour l'accueil des vélos !



CET ÉTÉ, DÉCOUVREZ  
LE CŒUR DE FRANCE  
**À VÉLO**

VAL DE CHER ET CANAL DE BERRY



**AVEC Rémi,**  
**JE COMBINE TRAIN + VÉLO**



J'ACHÈTE MA RÉSERVATION VÉLO  
EN FLASHANT CE QR-CODE



LA RÉGION ORGANISE VOS DÉPLACEMENTS  
EN CENTRE-VAL DE LOIRE

[www.remi-centrevalde Loire.fr](http://www.remi-centrevalde Loire.fr)



06



AT THE HEART OF THE STAR  
**OF BOURGES**

---

# Discovering Bourges and the surrounding area



©EVandenbraucke



## Bourges

Bourges European Capital of Culture 2028. Bourges reveals its rich cultural and historical past through each of its streets, buildings, gardens and cathedral, a UNESCO World Heritage Site. Strolling through the historic centre, you can admire the half-timbered houses and narrow streets that will transport you back to medieval times. For a more relaxing stroll, just a stone's throw from the historic centre, take a stroll along the banks of the Canal du Berry.

As you make your way towards Saint-Etienne's Cathedral, then the Palais Jacques Coeur, you'll skirt the Gallo-Roman ramparts and discover all the richness and diversity of Bourges' architectural heritage.

-  **Office Tourisme de Bourges**  
Place Simone Veil  
18000 Bourges
-  [www.ville-bourges.fr](http://www.ville-bourges.fr)
-  Located 1.6 km from Bourges train station

### Cathédrale Saint-Étienne

Saint-Etienne's Cathedral, a UNESCO World Heritage Site since 1992, is unique in its conception. A masterpiece of Gothic art, admirable for its proportions and the unity of its design, it bears witness to the power of Christianity in medieval France.

-  Place Etienne Dolet - 18000 Bourges
-  [www.bourges-cathedrale.fr](http://www.bourges-cathedrale.fr)
-  Located 1.7 km from Bourges train station



©EVandenbraucke



## Le Palais Jacques Cœur

Built between 1443 and 1451, the Grant House of Jacques Cœur, King Charles VII's treasurer, is a rare example of 15<sup>th</sup>-century civil architecture. A true masterpiece, it combines the Gothic repertoire with royal symbolism. A visit here will allow you to discover the extraordinary destiny of this man.

- 📍 10, bis rue Jacques Cœur - 18000 Bourges
- 🌐 [www.palais-jacques-coeur.fr](http://www.palais-jacques-coeur.fr)
- 🏠 Located 1.2 km from Bourges train station



## Villa Monin

Right in the heart of Bourges, MONIN offers you a concept that reveals the expression of all the facets of its art, which the company has been sharing and passing on with passion for over 100 years. This unique venue takes you on a journey through the world of Monin in a variety of settings: 1912, the Cour des Chefs, the cabinet de curiosité, the amphitheatre and the Manufacture.

- 📍 40, rue Moyenne - 18000 Bourges
- 🌐 [www.villamonin.fr](http://www.villamonin.fr)
- 🏠 Located 1.5 km from Bourges train station

## Les marais de Bourges

Located at the foot of the medieval quarter, the Marais offers a place to relax and explore, just a stone's throw from the historic centre of Bourges. The 135 hectares are lovingly cultivated as allotments by their owners, offering a surprising natural walk right in the heart of the city.

- 📍 Marais des Prébendes - 18000 Bourges
- 🌐 [www.ville-bourges.fr/site/marais](http://www.ville-bourges.fr/site/marais)
- 🏠 Located 1.9 km from Bourges train station

## Jardin des prés Fichaux

This garden has a very special charm, with its plant sculptures of hornbeams, curtains of French lime trees, rectilinear lawns and yew trees alongside beds and ponds around the open-air theatre. This garden has been awarded the 'Remarkable' label.

- 📍 Boulevard de la République - 18000 Bourges
- 🌐 [www.ville-bourges.fr/site/jardin-pres-fichaux](http://www.ville-bourges.fr/site/jardin-pres-fichaux)
- 🏠 Located 550 m from Bourges train station



# To the Vallée du Cher

## Musée de la porcelaine

Visitors are given a humorous insight into the amazing saga of porcelain. Then the parallel between current technologies and old machines shows how manufacturing processes have evolved. More than a hundred Louis Lourioux pieces in stoneware and porcelain are on display in the museum room.

- 📍 39, rue Louis Grandjean - 18500 Foëcy
- 🌐 [www.berryprovince.com](http://www.berryprovince.com)
- 🏠 Located 1.4 km from Foëcy train station



©Thierry Martrou



©Arthur Belbèder



## Musée des Fours Banaux

This museum, located at the foot of the Belfry, features two 15<sup>th</sup>-century ovens that are unique in the Centre-Val de Loire region. Don't miss the model of Vierzon in the Middle Ages, the Belfry clocks dating from the 15<sup>th</sup> and 19<sup>th</sup> centuries, the 15<sup>th</sup>-century statues of the Holy Evangelists and a fine Gothic window in the courtyard.

- 📍 7, rue du Château - 18100 Vierzon
- 🌐 [www.berrysolognetourisme.com](http://www.berrysolognetourisme.com)
- 🏠 Located 1.1 km from Vierzon train station

## Espace Rollinat

Located in the former Post Office, which has been completely refurbished, the Maurice Rollinat space is a new cultural hub featuring a Micro Folie with a digital museum and virtual reality space, as well as an exhibition room.

- 📍 1 Place Jacques Brel - 18100 Vierzon
- 🏠 Located 1 km from Vierzon train station



## Musée Vierzon

The Vierzon museum is housed in the former premises of the Société Française Vierzon factory, a renowned company that until 1958 produced a wide range of agricultural equipment, including the famous SFV tractors. Today, the museum boasts an extensive collection tracing the town's industrial history in the 19<sup>th</sup> and 20<sup>th</sup> centuries.

- 📍 11, rue de la Société Française - 18100 Vierzon
- 🌐 [www.ville-vierzon.fr](http://www.ville-vierzon.fr)
- 🏠 Located 260 m from Vierzon train station

## Château de Selles-sur-Cher

Just 15 minutes from the ZooParc de Beauval, a castle to visit with the whole family. Discover the castle's thousand-year history, explore its medieval wing and Renaissance pavilion, and its inner courtyards, including a three-hundred-year-old cedar that has been designated a Remarkable Tree of France.

- 📍 1, place du Château 41130 Selles-sur-Cher
- 🌐 [www.chateau-selles-sur-cher.com](http://www.chateau-selles-sur-cher.com)
- 🏠 Located 1 km from Selles-sur-Cher train station



©Jacques Atten

# The Blanc-Argent line



The Blanc Argent line links Salbris to Valençay with its metre-gauge trains. From Salbris, hop aboard the "BA" railcar to Romorantin, with its Sologne and Matra museums just 10 minutes from the station. After Gièvres, the train heads south through the Berry region to Valençay; the famous château is less than 15 minutes from the station.



©Michel Chassat



## Château de Valençay

With its Renaissance and classical architecture, and listed as one of the 22 great sites of the Loire Valley, the Château de Valençay is exceptional for its location overlooking the Nahon valley, offering you the charm of the countryside close to major towns. Come and visit the estate of a Prince!

- 📍 2, rue de Blois - 36600 Valençay
- 🌐 [www.chateau-valencay.fr](http://www.chateau-valencay.fr)
- 🏠 Located 850 m from Valençay train station
- 🚗 Access by Car Rémi 36, line A, departure from Châteauroux bus station

## Musée Matra

This unique official museum of the famous marque welcomes you to more than 3,000 m<sup>2</sup>. Here you can discover a three-dimensional saga: the industrial adventure, an absolutely unique sporting record, and the Matra spirit of innovation symbolised by numerous prototypes.

- 📍 17, rue des Capucins  
41200 Romorantin-Lanthenay
- 🌐 [www.museematra.com](http://www.museematra.com)
- 🏠 Located 300 m from Romorantin-Lanthenay train station



CENTRE-VAL DE LOIRE  
SAISON CULTURELLE & TOURISTIQUE

NOUVELLES  
**RENAISSANCES**  
SANCE(S)!

EN CENTRE-VAL DE LOIRE

2024 / EFFERVESCENCES

© Crédit photo : Shutterstock



Toute la programmation sur :

[nouvelles-renaissances.com](https://nouvelles-renaissances.com)



#NouvellesRenaissances

RÉGION  
CENTRE  
VAL DE LOIRE

# To Sancerre

## City of Sancerre

See Sancerre differently, rediscovering the town through details revealed to you by the beam of a torchlight. Architecture, sculptures and even the smallest elements will come to life without false modesty.

- 📍 Office de Tourisme du Grand Sancerrois  
18300 Sancerre
- 🌐 [www.berryprovince.com](http://www.berryprovince.com)
- 🏠 Located 600 m from the Car Rémi line 110 stop



## Église Saint-Germain - Berry Roman

A chapel of the castle of the powerful Sires de Sully, the church of Les Aix was home to a community of Augustinian canons in the 12<sup>th</sup> century and became a parish church in 1678. The elegant building, built of ochre stone and covered in brown tiles, is a fine example of Romanesque architecture in Berry.

- 📍 Rue du parvis - 18220 Les Aix-d'Angillon
- 🏠 Located 290 m from the Car Rémi line 110 stop



## Maison des Sancerre

Right in the heart of the historic centre of the village, the Maison des Sancerre invites you to discover the history of the winegrowers along an interactive, fun trail: museum, aromatic garden, panoramic terrace, shop and tastings - everything has been designed to make the world of wine accessible to everyone.

- 📍 3 rue du Méridien - 18300 Sancerre
- 🌐 [www.sancerreaop.fr](http://www.sancerreaop.fr)
- 🏠 Located 500m from the Car Rémi 18 line 110 stop



Easily accessible from Paris, visit **Sancerre from Cosne-sur-Loire** by taking the Rémi 18 bus - line 110.



# To Nevers

## CIAP - La Tuilerie

Located in La Guerche-sur-l'Aubois on the eastern branch of the Canal de Berry, the Tuilerie, founded by Thomas Sauvard in 1852, is a testament to the region's architectural and technical heritage. This mechanical tile works is one of the oldest in the region. The Tuilerie also offers you the chance to immerse yourself in the world of bats, the mysterious hidden residents of the site.

- 📍 27 rue du lieutenant Petit  
18150 La Guerche-sur-l'Aubois
- 🌐 [www.ciap-latuileries.fr](http://www.ciap-latuileries.fr)
- 🏠 Located 800 m from La Guerche-sur-l'Aubois train station



© Pays Loire Val d'Aubois



## City of Nevers

Nevers is a city of art and history, with an astonishingly diverse and rich heritage. On the banks of the Loire, discover its many facets, between city and nature. Follow the blue thread painted on the ground to make sure you don't miss a single monument: the cathedral, the Ducal Palace, the churches, the Porte du Croux...

- 📍 Office de Tourisme de Nevers  
1, rue Sabatier Palais Ducal - 58000 Nevers
- 🌐 [www.nevers-tourisme.com](http://www.nevers-tourisme.com)
- 🏠 Located 600 m from Nevers train station



# To Cœur de France in Berry

## Lac de Virlay

This 4 km family walk around the Lac de Virlay, part of the Natura 2000 network, will help you to discover its unspoilt flora and fauna. A discovery trail of the Lac de Virlay and its biodiversity is accessible all year round, thanks to around twenty panels equipped with QR codes to help you learn more.

- 📍 **Route de Bourges**  
18200 Saint-Amand-Montrond
- 🌐 [www.ville-saint-amond-montrond.fr](http://www.ville-saint-amond-montrond.fr)
- 🏠 Located 2.6 km from Saint-Amand-Montrond - Orval train station



## Abbaye de Noirlac

The Cistercian abbey of Noirlac unfolds nine centuries of tormented history and offers visitors the purity of its architecture. A place of respect, silence and fascination, Noirlac is one of the best-preserved abbeys in France. It is a centre for artistic production and dissemination, while remaining a tourist attraction open to visitors all year round.

- 📍 **Noirlac - 18200 Bruère-Allichamps**  
[www.abbayedenoirlac.fr](http://www.abbayedenoirlac.fr)
- 🏠 Located 4.4 km from Saint-Amand-Montrond - Orval train station





# Rates and good deals

## With Rémi Découverte, the price is limited... but the journeys aren't!

With your family or friends, travel unlimited by train and Rémi coach for up to 5 people over 2 or 3 days.

- Free for accompanying persons up to 4 people
- Take advantage of discounts at our tourist partners
- Pass valid for 2 or 3 days

	2 days	3 days
<b>Pass Rémi Découverte</b> Unlimited travel in Centre-Val de Loire	€45	€60
<b>Pass Rémi Découverte Plus</b> Unlimited travel in the Centre-Val de Loire and to/from Ile-de-France	€95	€120

## A Rémi card for everyone!

With the Rémi Liberté cards, you can take advantage of **reductions of up to 66% for one year** when travelling by Rémi train and coach, including from Paris and to neighbouring regions. **There's a card and benefits for every age.**

**How much does it cost? €30/year** (free for 4-14 year olds).

**Discount cards pay for themselves after 2 or 3 return journeys!**

### Rémi-Yep's annual pass

**Free card reserved for 15-25 year olds!**

It entitles you to :

- **guaranteed reductions of between 50% and 66% on the Rémi network**, including to neighbouring regions.
- **free tickets on weekends and public holidays throughout the Rémi network**, with a limited number of tickets on Rémi trains.

 All the info on the Yep's website: [www.yeps.fr](http://www.yeps.fr)



### Where can you buy your pass or card ?

- At the SNCF ticket offices of the Rémi transport network
- On the Rémi Centre-Val de Loire website: [www.remi-centrevalde Loire.fr](http://www.remi-centrevalde Loire.fr)



## By train, when you're travelling in a group it's even better!

If you are travelling with more than 10 people on the Rémi network by train, plan ahead and book your journeys.

To find out more about the details of the offer and the conditions, go to [www.ter.sncf.com/centre-val-de-loire/tarifs-cartes/tarifs-groupes](http://www.ter.sncf.com/centre-val-de-loire/tarifs-cartes/tarifs-groupes)

**-50%**

off with Rémi's group rate



## Discover our Rémi "transport + admission" Packs and combine the benefits:

Transport at 50% off and entry at a preferential price!

Offers are available for the following site:

- Château de Chambord
- Domaine de Chaumont-sur-Loire

🌐 Full details on the Rémi website: [www.remi-centrevaldeleire.fr](http://www.remi-centrevaldeleire.fr)



Take advantage of a preferential fare on presentation of your validated Rémi transport ticket less than 24 hours old.

Find them by scanning the QR code

or on website : [www.ter.sncf.com/centre-val-de-loire/decouvrir/guide-touristique-remi](http://www.ter.sncf.com/centre-val-de-loire/decouvrir/guide-touristique-remi)



# Cycling trips to discover the region in a different way



## From Paris

- Escapade on the wild Loire à Vélo between vineyards and meadows from Nevers to Gien (2 to 3 days)
- Weekend on the Loire à Vélo from Orléans to Blois via Chambord (2 days)
- Saint-Jacques by bike via the UNESCO cathedrals of Chartres and Tours (3 to 4 days)
- La Véloscénie and Le Perche by bike from Chartres to Nogent-le-Rotrou (2 days)
- The Scandibérique on the Canal du Loing between the green Venice of Montargis and Briare, with the canal bridge overlooking the Loire (1 day)

## From Tours

- Loire by bike, from vineyards to châteaux between Tours and Chinon (1 to 2 days)
- The Indre by bike from Tours to Châteauroux via the châteaux of Azay-le Rideau and Loches (3 days)
- Discover Coeur de France by bike from Tours to the medieval town of Montrichard (1 day)
- Discover Vendôme, Trinité Abbey and the surrounding area on Saint-Jacques by bike with the coach (1 or 2 days)

"À bicyclette..."



## From Blois

- Cycling in the Châteaux region, with several cycle routes to enjoy (3 to 5 days)
- The Loire à Vélo on the Joan of Arc trail and the medieval towns of Beaugency and Meung-sur-Loire between Blois and Orléans (1 to 2 days)
- The Loire à Vélo in Touraine with the châteaux of Chaumont-sur-Loire and Amboise between Blois and Tours (1 to 2 days)



## From Orléans

- The Loire à Vélo and the châteaux of Meung-sur-Loire, Beaugency and Chambord between Orléans and Blois (1 to 2 days)
- Escapade on the Loire à Vélo to the port city of Châteauneuf, the châteaux of Sully-sur-Loire and Gien (1 to 2 days)
- Visit the Gien earthenware factory by coach and cycle along the Loire to the Briare Canal Bridge (1 day)

## From Chartres

- Discover the Parc Naturel Régional du Perche via the Véloscénie from Chartres to Nogent-le-Rotrou (1 to 2 days)
- Saint-Jacques weekend by bike from Vendôme to Chartres with the coach (2 days)

## From Châteauroux

- Cycling along the Indre in George Sand country between Châteauroux and La Châtre, with one return journey by coach (2 days)

## From Bourges

- Discover Coeur de France by bike on the Canal de Berry between Bourges and Vierzon (1 day)
- Tasting of La Loire à Vélo, the Sancerre vineyards and the crottin de Chavignol from Sancerre by coach (1 to 2 days)



Flash this QR code to find all the information you need to plan your getaway

or on [www.francevelotourisme.com/destinations/region-centre-val-de-loire-a-velo](http://www.francevelotourisme.com/destinations/region-centre-val-de-loire-a-velo)

# Travelling by bike couldn't be easier!

## Take your bike on board trains with complete peace of mind

Take your bike on board all Rémi regional trains. **Online reservation of your €1 bicycle space is compulsory on certain routes, at weekends and on public holidays.**

Take advantage of the two seasonal services set up at certain times of the day to accommodate even more bikes:



The **Loire à vélo train** on the Orléans-Nantes-Le Croisic line, which can accommodate up to 83 bikes in high season.

The **Coeur de France à vélo train** on the Tours-Vierzon-Bourges-Nevers line, which can accommodate up to 25 bikes in high season

More info on: [www.remi-centrevaldeloire.fr/tourisme/offre-velo-de-remi/](http://www.remi-centrevaldeloire.fr/tourisme/offre-velo-de-remi/)



**Authorised subject to availability or reservation**

Classic or electric bikes



Trailers, folded or not



Recumbent bikes



**Always authorised**

Folding bikes and scooters



Tandems



Cargo bikes

## Carry your bike for free on coaches

Take your bike on board coaches on a number of routes between April and November.

Free reservation is required by telephone until 5PM the day before departure (or 5PM on Fridays for a Monday journey) on 0 806 70 33 33.

## Where can I hire a bike near a station?

### Tours

#### Détours de Loire

37, rue Charles Gille

[www.detoursdeloire.com](http://www.detoursdeloire.com)

[direction@detoursdeloire.com](mailto:direction@detoursdeloire.com)

02 47 61 22 23

#### Roue lib'

55, rue Bernard Palissy

[www.rouelib.eu](http://www.rouelib.eu)

[contact@rouelib.eu](mailto:contact@rouelib.eu)

06 76 53 52 13

### Orléans

#### Détours de Loire

58, rue de la Charpenterie

[www.detoursdeloire.com](http://www.detoursdeloire.com)

[direction@detoursdeloire.com](mailto:direction@detoursdeloire.com)

02 47 61 22 23

#### Vélo Val de Loire

10, quai Cypierre

[www.velovaldeloire.com](http://www.velovaldeloire.com)

[contact@velovaldeloire.com](mailto:contact@velovaldeloire.com)

02 38 56 80 62

### Blois

#### Détours de Loire

39, avenue Docteur Jean Laignet

[www.detoursdeloire.com](http://www.detoursdeloire.com)

[detoursdeloire@orange.fr](mailto:detoursdeloire@orange.fr)

02 47 61 22 23

#### Randovélo

29 Q, avenue Gambetta

[www.randovelo.fr](http://www.randovelo.fr)

[randovelo@randovelo.fr](mailto:randovelo@randovelo.fr)

02 54 78 62 52

#### Les Vélos Verts

Boulevard Alexandre Martin

[www.lesvelosverts.com](http://www.lesvelosverts.com)

[contact@lesvelosverts.com](mailto:contact@lesvelosverts.com)

02 54 74 57 05

#### Les Vélos Verts

3, avenue Gambetta

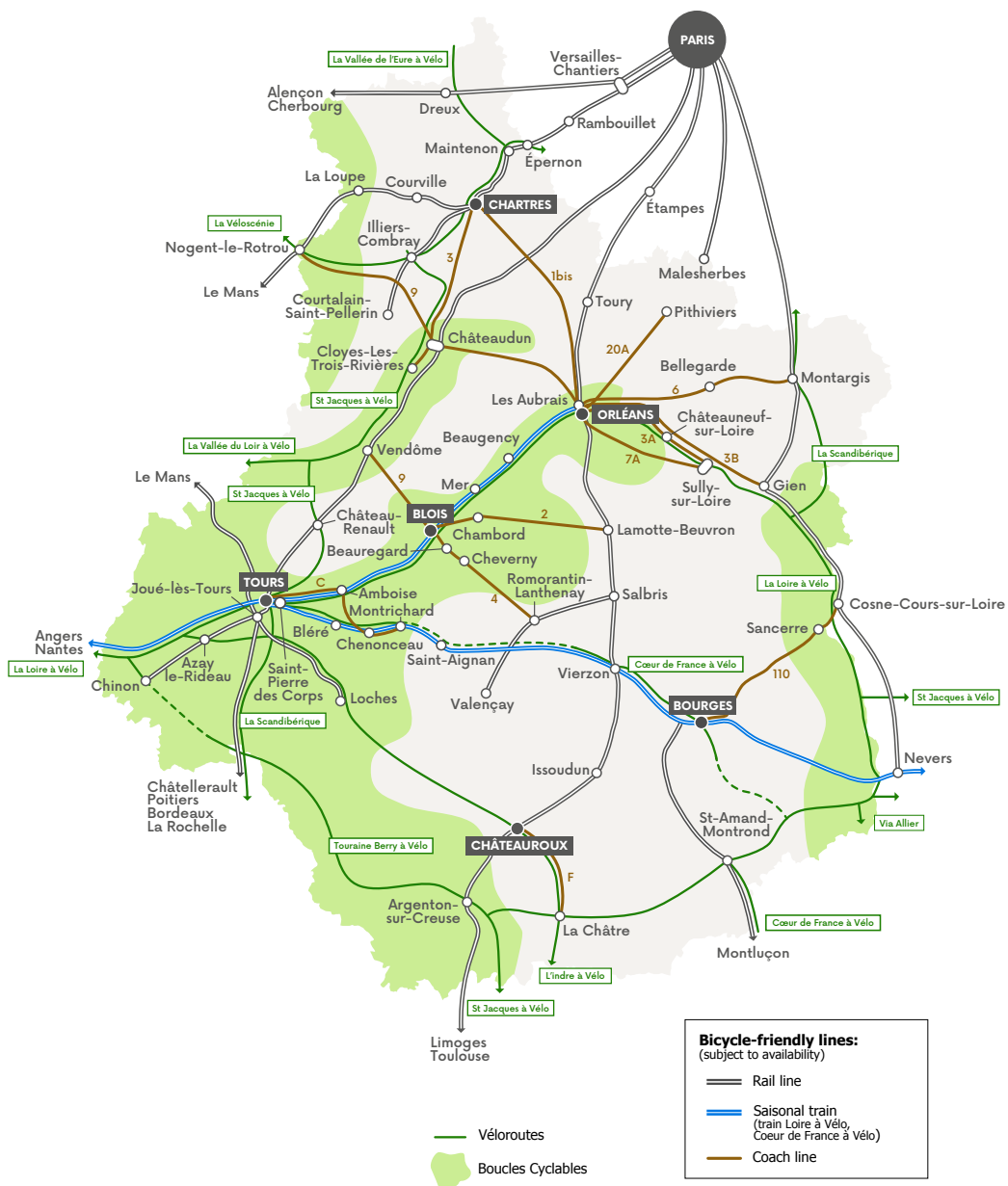
[www.lesvelosverts.com](http://www.lesvelosverts.com)

[marion@cheverny-voyages.com](mailto:marion@cheverny-voyages.com)

02 54 74 57 05



# The Rémi by bike network



# Votre réseau de transport en région Centre-Val de Loire

## RÉSEAU MULTIMODAL RÉMI

LIGNES DE TRAIN RÉMI EXPRESS

LIGNES DE TRAIN RÉMI

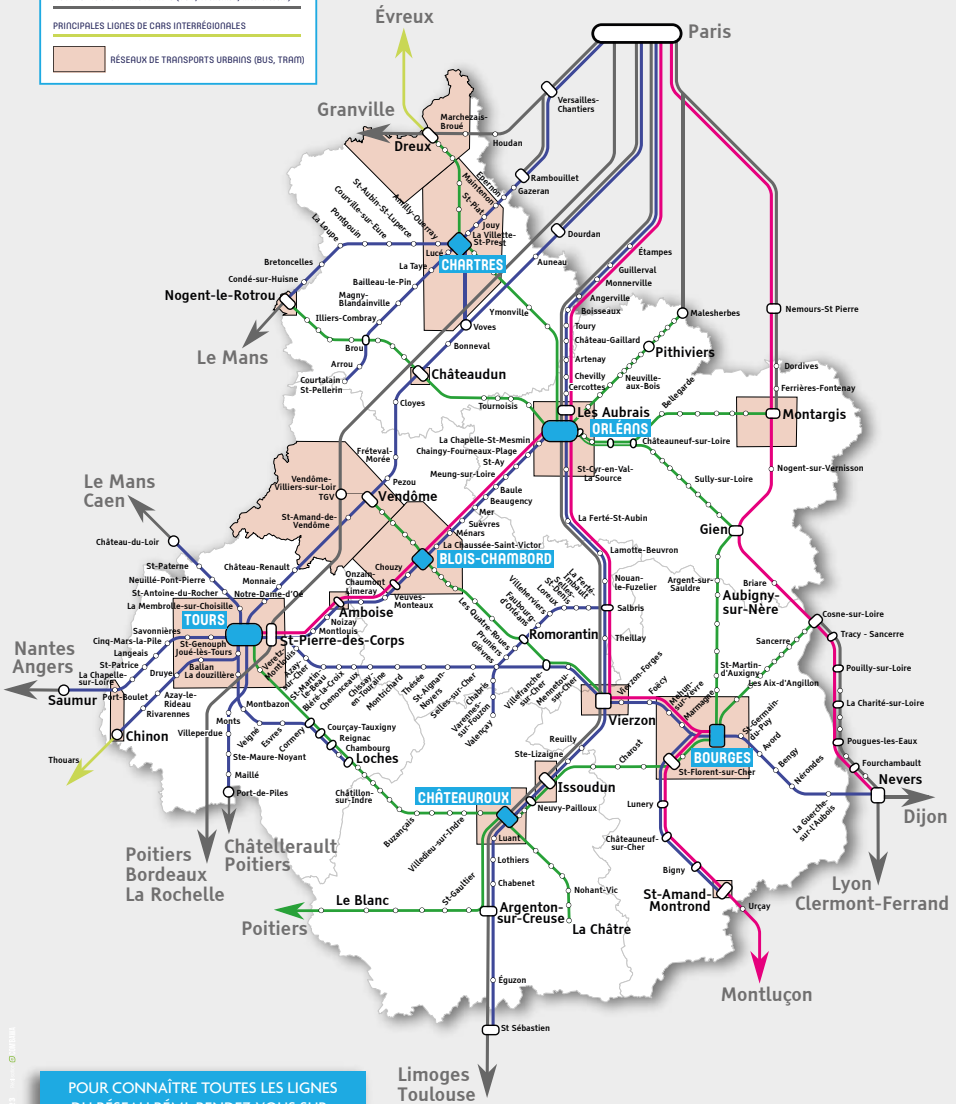
PRINCIPALES LIGNES DE CARS RÉMI

## AUTRES RÉSEAUX

AUTRES LIGNES FERROVIAIRES (TGV, Transilien, Intercités...)

PRINCIPALES LIGNES DE CARS INTERRÉGIONALES

RÉSEAUX DE TRANSPORTS URBAINS (BUS, TRAM)



POUR CONNAÎTRE TOUTES LES LIGNES  
DU RÉSEAU RÉMI, RENDEZ-VOUS SUR :

[www.remi-centrevalde Loire.fr](http://www.remi-centrevalde Loire.fr)

# Index

<b>A</b>		
Accrocamp (28)	28	
Aix-d'Angillon, Église Saint-Germain (18)	53	
Amboise, Château (37)	11	
Amboise, city (37)	11	
Aquarium de Touraine (37)	13	
Argenton-sur-Creuse, city (36)	44	
Art montgolffière (41)	38	
Azay-le-Rideau, Château (37)	08	
<b>B</b>		
Beaugency, Château (45)	25	
Beaugency, city (45)	25	
Beaulieu-lès-Loches, city (37)	14	
Beaux-Arts de Chartres, Palais épiscopal (28)	29	
Beaux-Arts de Tours, Musée (37)	07	
Beaux-Arts d'Orléans (45)	19	
Beaux-Arts et Histoire Naturelle, Châteaudun (28)	32	
Bertrand, Musée (36)	42	
Blanc Argent, line (36)	51	
Blois, Château royal (41)	36	
Blois, city (41)	36	
Bourges, Cathédrale Saint-Etienne (18)	48	
Bourges, Marais (18)	49	
Bourges, city (18)	48	
Bourré, Truffeau quarry and underground city (41)	13	
Brasserie Terra (28)	31	
Briare, Pont canal (45)	23	
Buzançais, city (36)	45	
<b>C</b>		
Candé, Domaine (37)	15	
Centre de Création Contemporaine Olivier Debré (37)	07	
Chambord, Domaine national (41)	37	
Chartres, Cathédrale Notre-Dame (28)	29	
Chartres, city (28)	28	
Châteaudun, Château (28)	32	
Châteauroux, city (36)	42	
Châtillon-sur-Indre, Cité médiévale and its keep (36)	45	
Chaumont-sur-Loire, Domaine (41)	38	
Chenonceau, Château (37)	12	
Chasse, Château-musée (45)	22	
Cheverny, Château (41)	37	
Chinon, Forteresse royale (37)	08	
Chinon, city (37)	08	
Chocolaterie Alex Olivier (45)	20	
CJAP - La Tuilerie (18)	54	
Clos Lucé, Château (37)	11	
Compa, Conservatoire de l'agriculture (28)	28	
Compagnonnage, Musée (37)	06	
Comtes du Perche, Château (28)	33	
<b>D</b>		
Deux marines, Musée (45)	23	
<b>E</b>		
Epéron, city (28)	31	
Escape Kazoku (37)	12	
Espace Maurice Rollinat (18)	50	
<b>F</b>		
Faïencerie, Musée (45)	23	
Family Park (37)	15	
Ferté-Saint-Aubin, Château (45)	24	
Fondation du doute (41)	36	
Fours Banaux, Musée (18)	50	
<b>G</b>		
Gaillard, Château (37)	11	
George Sand, Maison et parc (36)	44	
Girodet, Musée (45)	21	
Grottes de Foulon (28)	32	
Guinguette, Domino (41)	39	
Guinguette, la Capitainerie (45)	25	
Guinguettes, Orléans (45)	18	
Guinguette, Tours-sur-Loire (37)	07	
<b>H</b>		
Helyett, Musée (45)	22	
Histoire naturelle de Tours, Musée (37)	07	
Hospice St Roch, Musée (36)	43	
<b>I</b>		
Islette, Château (37)	08	
<b>J</b>		
Jardin des prés Fichaux (18)	49	
Jardin personnel d'André Eve (45)	20	
Jeanne d'Arc, Maison et Centre (45)	19	
<b>L</b>		
Langeais, Château (37)	09	
Langeais, city (37)	09	
Loches, Cité royale (37)	14	
Loches, city (37)	14	
<b>M</b>		
Magie, Maison (41)	36	
Maillé, Maison du Souvenir (37)	15	
Maintenon, Château (28)	31	
Marcel Proust, Musée et Maison de Tante Léonie (28)	33	
Marine de Loire, Musée (45)	21	
Matra, Musée (41)	51	
Meules et pavés, Conservatoire (28)	31	
Meung-sur-Loire, Château (45)	25	
Montargis, Château royal (45)	21	
Montargis, city (45)	21	
Montbazou, Forteresse (37)	14	
Montrichard, city (41)	13	
<b>N</b>		
Nevers, city (58)	54	
Noirlac, Abbaye (18)	55	
Notre-Dame, Église (36)	42	
<b>O</b>		
Observatoire Loire de Blois (41)	39	
Orléans, Cathédrale, Sainte Croix (45)	19	
Orléans, city (45)	18	
<b>P</b>		
Palais Jacques Cœur (18)	49	
Parc Floral de la source (45)	19	
Passion équitation (45)	24	
Picassiette, Maison (28)	29	
Porcelaine, Musée (18)		
<b>R</b>		
Restaurant, la Madeleine de Proust (41)	38	
Restaurant, le Broéliande (36)	43	
Rochecorbon, Guinguette (37)	10	
<b>S</b>		
Saint-André, Église (36)	42	
Saint-Outrille, Ancienne collégiale et Église Notre-Dame (36)	45	
Sancerre, Maison (18)	53	
Sancerre, city (18)	53	
Savonnières, Grottes pétifiantes (37)	09	
Selles-sur-Cher, Château (41)	50	
Shoah, Musée lieu de mémoire (45)	20	
Sologne, Musée (41)	39	
Tully-sur-Loire, Château (45)	22	
<b>T</b>		
Tanneries (45)	21	
Tatin, Maison (41)	24	
Tour blanche (36)	43	
Tours-Canoë (37)	12	
Tours, Château (37)	06	
Tours, city (37)	06	
Transports, Musée (45)	20	
<b>V</b>		
Valençay, Château (36)	51	
Valéry Renaudat, Domaine (36)	43	
Vendôme, city (41)	10	
Vierzon, Musée (18)	50	
Villa Monin (18)	49	
Virly, Lac (18)	55	
Vitrail, Centre international (28)	29	
<b>Z</b>		
ZooParc de Beauval (41)	12	

# Rémi Information

## How to get information?



### With our agents

SNCF staff in stations and on trains are available to answer your questions.



### On the internet

[www.remi-centrevalde Loire.fr](http://www.remi-centrevalde Loire.fr)

To know everything about your trains and buses Rémi in the région Centre-Val de Loire.



### By phone

#### Centre de Relations Usagers Rémi

From Monday to Saturday from 6AM to 8PM, advisors are at your disposal for all your questions on trains, fares, services, accessibility.

0 806 70 33 33 Service gratuit  
\* prix appel



### On your smartphone

#### Rémi app

All the information about the Rémi buses in the région Centre-Val de Loire (free app).

### On your social networks

Board in real time

 @RemiTrain, @RemiTrainPCLM et @Remi\_cvdI

 Rémi Centre-Val de Loire

 remi\_centrevalde Loire

## How to buy?



### In one of our stations equipped with a counter or on one of our automats

These machines allow you to buy a Rémi ticket (train/car) and to load your subscription on the JV Malin ticketing card.



### On the internet

[www.remi-centrevalde Loire.fr](http://www.remi-centrevalde Loire.fr)

If you travel without a ticket, you are liable to a fine of 180 euros. Amount due to the Treasury, for a trip outside the Paris area, if no payment is made to SNCF within 3 months.

## A remark, a suggestion on a route Rémi?

### By internet

Fill out the online form on [www.remi-centrevalde Loire.fr](http://www.remi-centrevalde Loire.fr), section "Contactez-nous".

### By phone

Call the Centre de Relations Usagers Rémi:

0 806 70 33 33 Service gratuit  
\* prix appel

### By post

Send us a letter:  
Centre de Relations Usagers Rémi  
BP 40625 - 37206 Tours Cedex 03

### On a TGV or intercity journey

Did you have a problem during your journey with TGV INOUI or Intercités? Fill in the complaint form on SNCF.com, customer service under the heading "complaints".